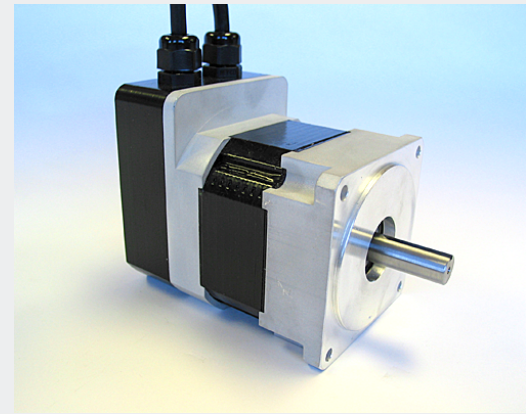
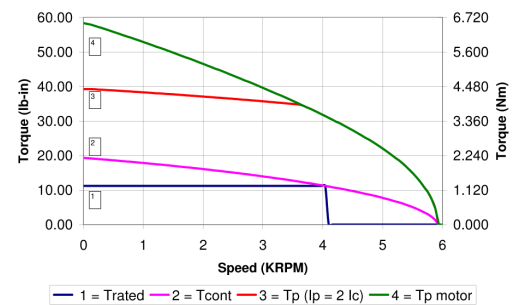


- Designed with a medium to high Ke to accommodate low and high buss voltage applications
- Voltage rating up to 325 Vdc for offline drives
- TENV and IP54 environmental construction
- Compact, optical commutation encoders (optional)
- External NEMA 34 24Vdc holding brake (optional)
- Precision servo gearing (optional)

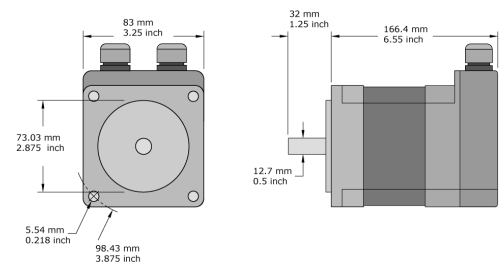
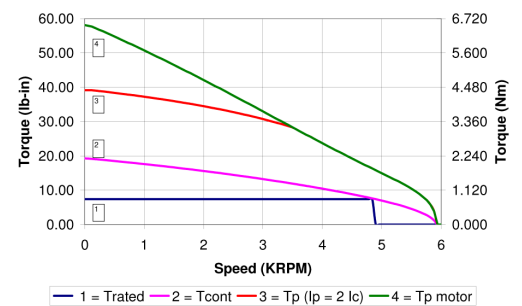


Ratings	Symbol	Units	
Continuous Stall Torque	Tcs	2.278 (20.16)	Nm (lb-in)
Peak Stall Torque	Tps	6.860 60.71	Nm (lb-in)
No Load Max. Speed	ω nl	6000	RPM
Continuous Rated Torque	Tcr	1.095 (9.69)	Nm (lb-in)
Peak Rated Torque	Tpr	2.189 (19.37)	Nm (lb-in)
Rated Speed	ω rated	4600	RPM
Rated Power	W (HP)	527 (0.71)	Watts (HP)
Inductance L-L	L	1.38	mH
Resistance L-L	R	0.35	ohms
Max. Terminal Voltage	V dc	325	Vdc
WINDING			
SINUSOIDAL AC VALUES			
Current at Cont. Stall Torque, o-p	A rms	10.10	Amp
Current at Peak Torque, o-p	A peak	42.83	Amp
Torque Constant L-L	Kt rms	0.140 (1.24)	Nm/A rms (lb-in/A)
Voltage Constant L-L	Ke rms	0.14 (14.67)	V/rad/sec (V/kRPM)
TRAPEZOIDAL DC VALUES			
Current at Cont. Stall Torque, o-p	A dc	14.28	Amp
Current at Peak Torque, o-p	A dc	42.83	Amp
Torque Constant L-L	Kt dc	0.188 (1.66)	Nm/A (lb-in/A)
Voltage Constant L-L	Ke dc	0.188 (19.70)	V/rad/sec (V/kRPM)
MECHANICAL			
Max. Axial Shaft Load	Fa	44.48 (10.00)	N (lb)
Max. Radial Shift Load	Fr	133.45 (30.00)	N (lb)
Motor Constant, L-L Trapezoidal	Km	0.19 (1.65)	Nm/ \sqrt{w} (lb-in/ \sqrt{w})
Motor Inertia	Jm	0.00023730 (0.0021000)	Kg-m ² (lb-in-s ²)
Motor Weight		4.082 (9.00)	Kg (lb)
Thermal Resistance	Rth	1.02	°C/Watt
Thermal Time Constant	TTC	15.00	min
Max. Winding Temperature	Tw	125	°C

I3486197NC-XXXX @ 325 Vdc



I3486197NC-XXXX @ 170 Vdc



*Test conditions: Motor operated at rated winding temperature, mounted to an aluminum heat-sink.
Aluminum Heat-sink: 12 x 12 x 1/2



MOTION CONTROL GROUP

888-624-3478 (U.S. & Canada)
+1 507-233-7000 (All other countries)
www.motioncontrolgroup.com
sales@motioncontrolgroup.com

Configure Order Number

MOTOR									FEEDBACK	BRAKE	SEAL			
I								N	C	-				

Standard motor assemblies can be configured using the catalog number format above and motor options listed below. Motor options are typically stocked as separate components and can be quickly assembled to order. Cables and connector kits are motor accessories and ordered as separate items. Examples of configured motor assemblies:

I2351014NC-HCXX - I2351014NC Motor w/ HC Hall device feedback

I3482150NC-ZA5X - I3482150NC Motor w/ 1000 Line Encoder (5 Vdc 6 Ch w/ LD) and \5' Brake

Contact MCG for any required special features not listed here.

MOTOR OPTIONS

Feedback

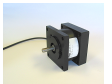
Hall Effect Device

HC3 Hall Effect for I3480, Factory Installation Only

Brakes

Holding Brakes - Eternal "Bolt-On" Mounting

5 Brake, 24 Vdc, B5 NEMA 34 w/ 1/2 inch output shaft



Shaft Seal

Shaft Seal

S3 Shaft Seal, I3480 series

MOTOR ACCESSORIES

Cables & Connectors

Connector Kits - Power and Feedback

9700528 Mating Power Connector Kit, body and 4 crimp contacts (P3)
9700523 Mating ComTrack Encoder Connector Kit, body and 16 crimp contacts (FC)
9700526 Mating Hall Connector Kit, body and 6 crimp contacts (FH)



MOTION CONTROL GROUP

888-624-3478 (U.S. & Canada)
+1 507-233-7000 (All other countries)
www.motioncontrolgroup.com
sales@motioncontrolgroup.com