

SPECIFICATIONS:

STEPS PER REVOLUTION: 200	ROTOR INERTIA: 2750G-CM ² (15.0 OZ-IN ²)NOM
STEP ANGLE: 1.8°	DETENT TORQUE: 3569 G-CM (49.56 OZ-IN)MIN
STEP TO STEP ACCURACY: ±5 % [1], [2]	INSULATION CLASS: B
POSITIONAL ACCURACY: ±5 % [1], [3]	BEARINGS: ABEC 3, DOUBLE SHIELDED
HYSTERESIS:- %	WEIGHT: 3.8 KG (8.4 LB)
SHAFT RUNOUT: 0.05 T.I.R.	TEMP. RISE: 80 °C MAX. [8]
RADIAL PLAY: 0.02 MAX W/A .5KG RADIAL LOAD	OPERATING TEMP. RANGE: -20 TO +50 °C
END PLAY: 0.08 MAX W/A .5KG AXIAL LOAD	STORAGE TEMP. RANGE: -30 TO +70 °C
	RELATIVE HUMIDITY RANGE: 15 TO 85 %

[7]

SPECIFICATION	NUMBER OF PHASE	RESISTANCE PER PHASE OHM ±10%	INDUCTANCE PER PHASE mH ±20%	RATED CURRENT Amp	RATED VOLTAGE V	HOLDING TORQUE Nm Min
BI-POLAR SERIES	2	1.94	21.6	2.8	5.43	8.9
BI-POLAR PARALLEL	2	0.48	5.4	5.6	2.72	8.9
UNI-POLAR	4	0.97	5.4	4.0	3.88	6.4

HT34-506

[1]

NOTES, UNLESS OTHERWISE SPECIFIED:

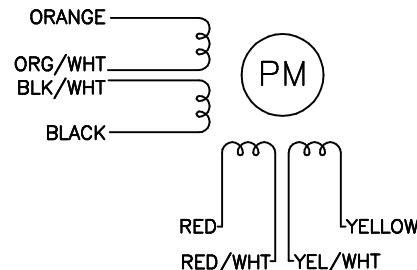
- [1] MEASUREMENTS MADE AT RATED CURRENT IN EACH PHASE.
- [2] BETWEEN ANY TWO ADJACENT STEP POSITIONS.
- [3] MAXIMUM ERROR IN 360°.
4. HIPOT 500 VAC, 60 Hz FOR ONE MINUTE.
- [5] LEADS: 8, 22AWG, 7 STRAND MIN.,UL AND CSA APPROVED, UL 1430 OR UL 3265.
6. INSULATION RESISTANCE: 100 MEGOHMS MIN AT 500 VDC.
- [7] AS MEASURED USING AN A.C. INDUCTANCE BRIDGE, AT 1KHz.
- 8 AS MEASURED BY THE CHANGE IN RESISTANCE METHOD, WITH RATED VOLTAGE APPLIED TO 2 PHASES; WITH MOTOR AT REST.
- [9] SHAFT OPTION: IF DOUBLE SHAFT REQUIRED ADD "D" TO END OF PART NUMBER. DOUBLE SHAFT REQUIRES ADDED HOLES FOR ENCODER OPTIONS.
10. THIS MOTOR TO BE MANUFACTURED IN COMPLIANCE WITH EU DIRECTIVE "ROHS 2002/95/EC".
- [11] MOTOR LABEL TO INCLUDE "ROHS" COMPLIANT, 'MADE IN (COUNTRY OF ORIGIN)' AND DATE CODE.
12. HIGH TORQUE MOTOR DESIGN.

BIPOLAR, FULL STEP, 2 PHASE ON PARALLEL CONNECTED

SWITCHING SEQUENCE FOR CW ROTATION FACING MOUNTING END

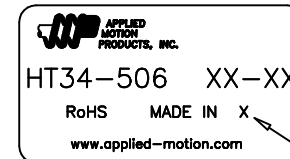
STEP	ORANGE & BLK/WHT	BLACK & ORN/WHT	RED & YEL/WHT	YELLOW & RED/WHT
0	+	-	+	-
1	-	+	+	-
2	-	+	-	+
3	+	-	-	+
4	+	-	+	-

↑
CCW

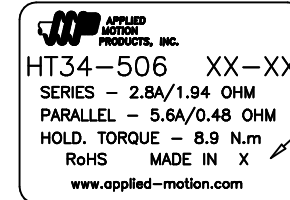


REVISIONS

ECO NO.	REV	DESCRIPTION	DATE	APPROVED
5982	A	INITIAL RELEASE	10/5/09	J KORDIK
6030	B	SPEC CHANGES	12/2/09	J KORDIK

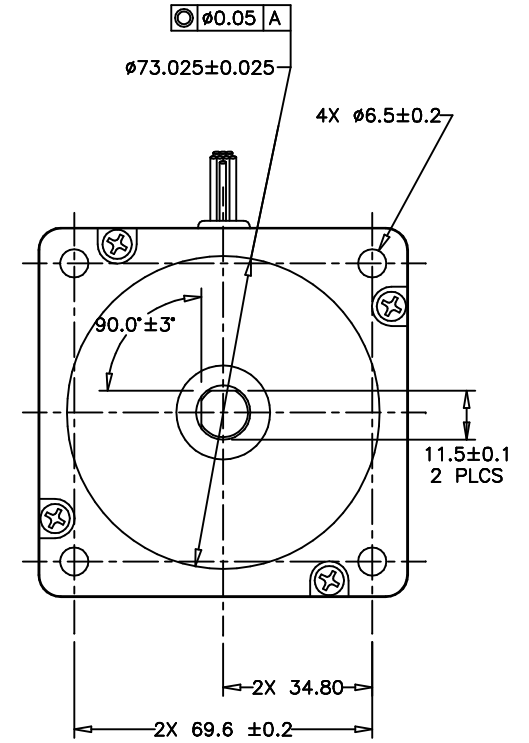
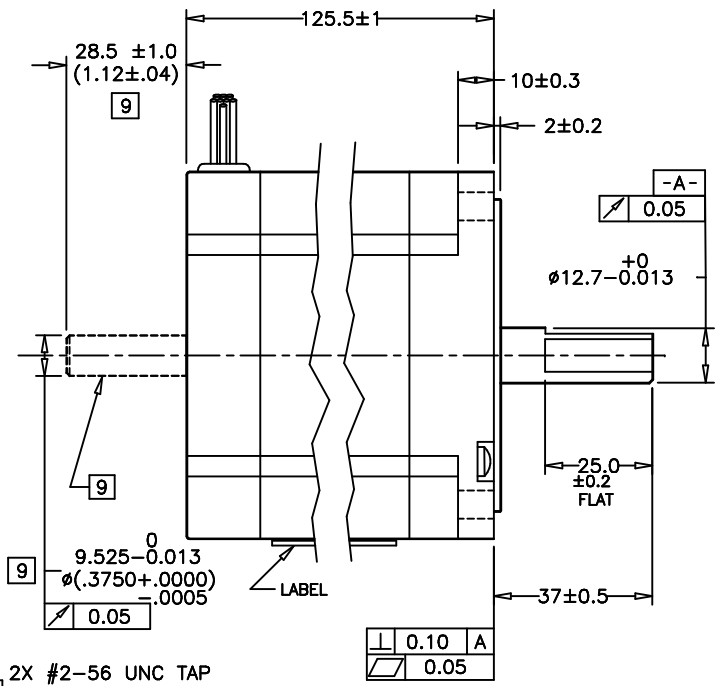
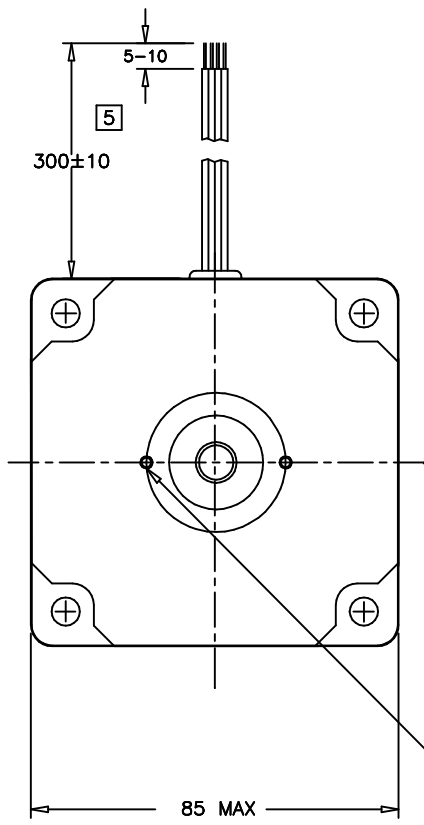


LABEL DETAIL
BOTH OPTIONS ACCEPTABLE



[11]

CONTRACT NO. -		APPLIED MOTION PRODUCTS, INC.			
APPROVALS	DATE	STEP MOTOR OUTLINE			
DRAWN <i>R. JONEZ</i>	9/1/09				
CHECKED					
APPROVED					
APPROVED		B	COMPUTER DATA BASE DRAWING	DWG NO. HT34-506	REV B
SCALE: NONE		SHEET 1 OF 2			



9 2X #2-56 UNC TAP
4.5 MIN DEEP ON
A φ32.5 B.C.

TOLERANCES DECIMALS: MM (INCH) X.XXX = ± (.005) X.XX = ±0.13 (.010) X.X = ±0.25 (.020) ANGLES: MACH. = ±.5° CHAM. = ±5°	THIRD ANGLE PROJECTION 			
	APPROVALS DRAWN CHECKED	DATE 9/1/09	STEP MOTOR OUTLINE	
	R. JONEZ		B DWG NO. HT34-506	REV B
	COMPUTER DATA BASE DRAWING	APPROVED	SCALE: NONE	SHEET 2 OF 2