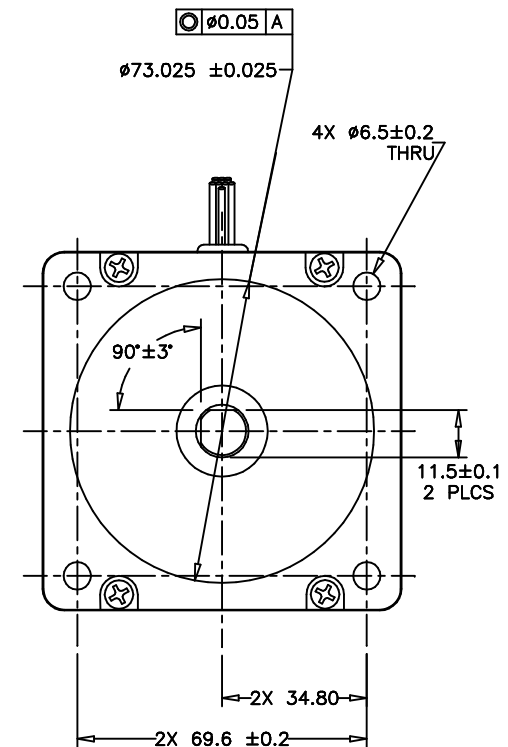


9 9.525<sup>0</sup>-0.013  
 Ø(.3750<sup>+</sup>.0000)  
 .0005  
 0.05

2X #2-56 UNC TAP  
 4.5 MIN DEEP ON  
 A Ø32.5 B.C.



TOLERANCES		THIRD ANGLE PROJECTION		APPLIED MOTION PRODUCTS, INC.	
DECIMALS: MM (INCH) X.XXX = ± (.005) X.XX = ±0.13 (.010) X.X = ±0.25 (.020) ANGLES: MACH. = ±.5° CHAM. = ±5°					
COMPUTER DATA BASE DRAWING		APPROVALS      DATE DRAWN <i>R. JONEZ</i> 8/28/09 CHECKED APPROVED			
<b>STEP MOTOR OUTLINE</b>				B	REV B
SCALE: NONE				DWG NO. HT34-505 SHEET 2 OF 2	