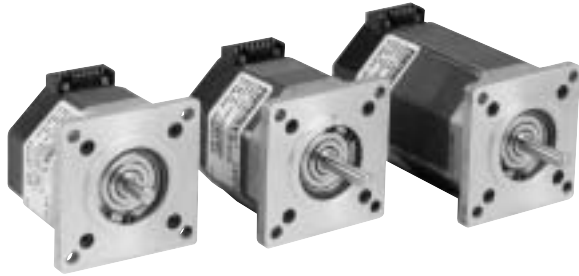
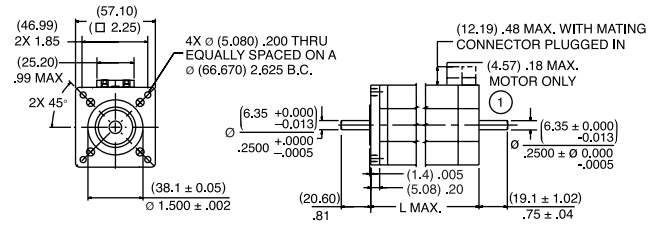


PACIFIC SCIENTIFIC POWERMAX II MOTORS



MOTOR DIMENSIONS

(mm) in

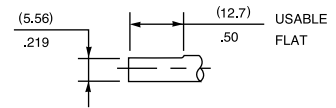


① Optional rear shaft extension available as shown. Same diameter as front shaft extension.

Connector Motor Model	Length	
	mm	in
P2H	40.7	1.60
P or M21	52.3	2.06
P or M22	78.7	3.10

Standard Shaft Options

1. Shaft modifications also available. Contact factory.
2. Optional flat available on front shaft as shown.



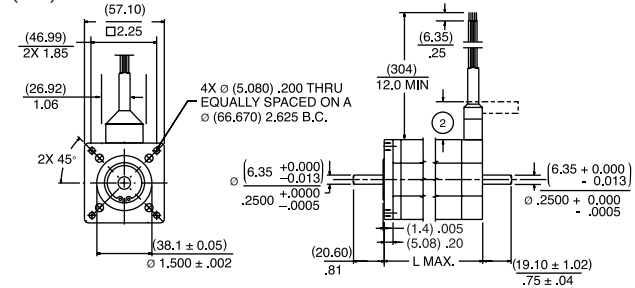
Features

Benefits

Two year warranty	High quality, dependable operation
Polymer encapsulated stator	Exceptional thermal dissipation
Polymer end bell with threaded inserts	End bell runs cooler, provides greater flexibility in mounting encoder and brake options
Largest available shaft diameter on a NEMA 23 stepper	Withstands high radial and axial loads. Supports numerous shaft modifications
Oversized 30 mm bearings	Increases bearing fatigue life (L_{10}), extends motor life, reduces downtime
Optional Sigmax [®] technology	Increases available torque
Optional low inertia rotor	Produces the highest acceleration rate possible
Precision ground rotor OD and honed stator ID for concentric air gap in an economical motor design	High quality performance in an economical motor design
Exposed laminations aids thermal dissipation	Improved heat dissipation extends motor life, reduces downtime

FLYING LEAD MOTOR

(mm) in



② Flexible rubber boot may be bent as shown. Normal height 1.0 inch (25.4)

Flying Lead Motor Model	Length	
	mm	in
P2H	40.7	1.60
P or M21	52.4	2.06
P or M22	78.8	3.10

PACIFIC SCIENTIFIC POWERMAX II MOTORS

RATINGS AND CHARACTERISTICS SEE SYSTEM RECOMMENDATIONS AND DATA ON PAGE 87.

Motor parameters and winding data.

Typical Leadwire Motor Model Number	Connection ^①			Holding Torque ^② (2 phases on) oz-in (N-m) ±10%	Rated Current/Phase ^③ (amps DC)	Phase Resistance (ohms) ±10%	Phase Inductance ^④ (mH) Typical	Detent Torque oz-in (N-m)	Thermal Resistance ^⑤ (°C/watt)	Rotor Inertia oz-in-S ² (kgm ² x 10 ⁻³)	Net Weight kg (lbs)
	Parallel	Series	Unipolar								
STANDARD P2H SERIES 1/2 ROTOR STACK											
P2HNRFH-LNN-NS-00	●			59 (0.42)	5.2	0.22	0.5	2.5 (0.018)	6.6	0.0010 (0.007)	0.45 (1.0)
P2HNRFH-LNN-NS-00		●		59 (0.42)	2.6	0.90	1.9				
P2HNRFB-LNN-NS-00			●	42 (0.29)	3.68	0.44	0.5				
P2HNRFB-LNN-NS-00	●			59 (0.42)	2.6	0.76	1.9				
P2HNRFB-LNN-NS-00		●		59 (0.42)	1.3	3.04	7.6				
P2HNRFB-LNN-NS-00			●	42 (0.29)	1.84	1.52	1.9				
SIGMAX[®] M21 SERIES 1 ROTOR STACK											
M21NRFA-LNN-NS-00	●			142 (1.00)	5.6	0.23	0.7	9.4 (0.066)	5.5	0.0017 (0.012)	0.68 (1.5)
M21NRFA-LNN-NS-00		●		142 (1.00)	2.8	0.92	2.8				
M21NRFA-LNN-NS-00			●	100 (0.71)	4.0	0.46	0.7				
M21NRFB-LNN-NS-00	●			137 (0.97)	4.6	0.32	1.0				
M21NRFB-LNN-NS-00		●		137 (0.97)	2.3	1.28	4.0				
M21NRFB-LNN-NS-00			●	97 (0.68)	3.3	0.64	1.0				
STANDARD P21 SERIES 1 ROTOR STACK											
P21NRFA-LNN-NS-00	●			114 (0.81)	5.6	0.23	0.8	4 (0.028)	5.5	0.0017 (0.012)	0.68 (1.5)
P21NRFA-LNN-NS-00		●		114 (0.81)	2.8	0.92	3.2				
P21NRFA-LNN-NS-00			●	81 (0.57)	4.0	0.46	0.8				
P21NRFB-LNN-NS-00	●			111 (0.79)	4.6	0.32	1.1				
P21NRFB-LNN-NS-00		●		111 (0.79)	2.3	1.28	4.4				
P21NRFB-LNN-NS-00			●	79 (0.55)	3.3	0.64	1.1				
SIGMAX[®] M22 SERIES 2 ROTOR STACK											
M22NRFA-LNN-NS-00	●			230 (1.62)	6.5	0.21	0.7	17 (0.12)	4.5	0.0036 (0.025)	1.13 (2.5)
M22NRFA-LNN-NS-00		●		230 (1.62)	3.3	0.84	2.8				
M22NRFA-LNN-NS-00			●	163 (1.15)	4.6	0.42	0.7				
M22NRFB-LNN-NS-00	●			253 (1.79)	4.6	0.38	1.7				
M22NRFB-LNN-NS-00		●		253 (1.79)	2.3	1.52	6.8				
M22NRFB-LNN-NS-00			●	179 (1.26)	3.3	0.76	1.7				
STANDARD P22 SERIES 2 ROTOR STACK											
P22NRFH-LNN-NS-00	●			197 (1.39)	6.5	0.21	0.8	7 (0.049)	4.5	0.0036 (0.025)	1.13 (2.5)
P22NRFH-LNN-NS-00		●		197 (1.39)	3.3	0.84	3.2				
P22NRFB-LNN-NS-00			●	139 (0.98)	4.6	0.42	0.8				
P22NRFB-LNN-NS-00	●			214 (1.51)	4.6	0.38	2.1				
P22NRFB-LNN-NS-00		●		214 (1.51)	2.3	1.52	8.4				
P22NRFB-LNN-NS-00			●	151 (1.07)	3.3	0.76	2.1				

All ratings typical and at 25°C unless otherwise noted.

- ① Refer to Selection Guide for more information.
- ② With rated current applied.

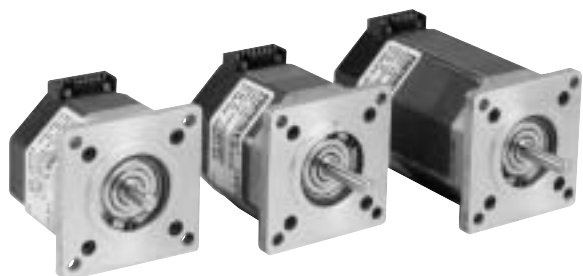
- ③ Windings at 130°C and motor in still air at 40°C (without heat sink). Operation of these motors above rated current may cause demagnetization. Contact factory.
- ④ Small signal inductance as measured with impedance bridge at 1kHz, 1 amp.
- ⑤ Thermal resistance measured with motor hanging in still air (unmounted).



MOTIONEERING[®] CD-ROM

For more detailed product and selection information, see the MOTIONEERING CD-ROM inside the back cover of this catalog or visit our website at www.servo2go.com

POWERMAX II STEPPER SYSTEMS



The performance information shown in the torque/speed curves that follow show the POWERMAX II family of NEMA 23 step motors with windings, connections and current levels selected for maximum performance with the drives shown on this page. For additional assistance in sizing or selecting the stepper system appropriate for your application, contact Danaher Motion Customer Support at 815-226-2222.

POWERMAX II STEPPER SYSTEMS



6210/6215 Microstepping Drives SEE PAGE 74

- 24-40 VDC input
- Step/direction input or oscillator models
- Current selectable from 1 to 3.5 amps peak
- Microstepping - 4 step sizes



6410/6415 Microstepping Drives SEE PAGE 72

- 24-75 VDC input
- Step/direction input or oscillator models
- Current selectable from 0.625 to 7.1 amps peak
- Selectable step sizes, binary or decimal, full to 1/250 or 1/256

POWERMAX II STEPPER SYSTEMS

