



AXIOM[®] PLUS IS NOW STANDARD WITH ANALOG INPUT AND MODBUS

Announcing...Version 2.5x

As part of our ongoing commitment to continuation engineering, Tol-O-Matic is pleased to announce the release of version 2.5x of the AxiomPlus. We have incorporated a variety of user-requested features, intended to enhance connectivity, expand the possible applications and increase usability of the AxiomPlus. These features will allow users to connect to a wide range of human interface and analog devices, connect several controllers together and interact in real-time with both the sequential program and the PLC.

For a more in-depth understanding of all these features and their use, you can visit www.tolomatic.com and view or download the most recent AxiomPlus Software User's Manual, or call our technical sales group at 1-800-328-2174.

New Features Including Analog Input

- Dual use analog input (use as analog or opto-isolated input)

- Debug mode added to sequential program

Run program in single steps, multiple steps or to a specified line number

"Watch window" for monitoring and changing values of registers and flags

- Registers have been expanded to include counter, timer and analog values in addition to position, velocity and torque limit

- PLC flags and I/O can be read and written via ModBus or serial port ASCII commands

- Sequential programming instructions added:

Absolute position feedback based on analog input

Analog input position and velocity (force control) moves

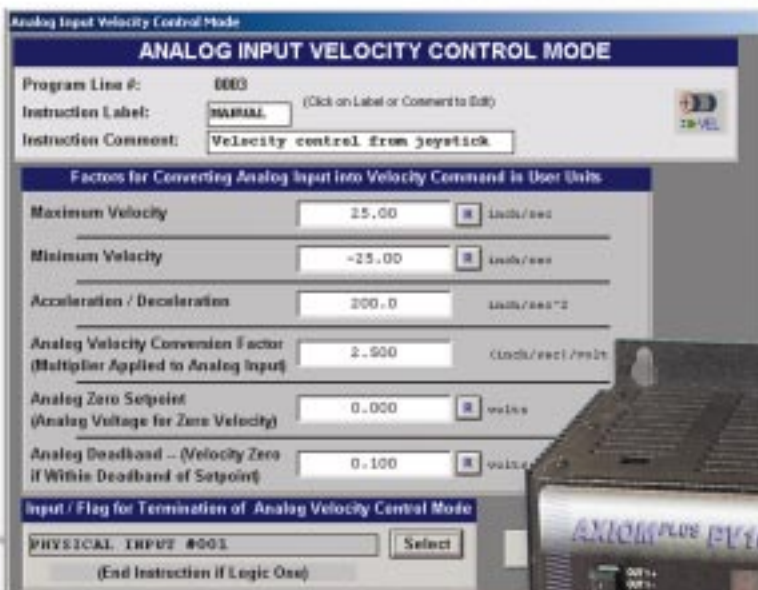
Save analog input to register

Branch on analog input compare

Modify count register value

- PLC instructions added:

"Range window" to process variable compare instruction



Sold & Serviced By

SERVO2GO.COM

Toll Free Phone: 877-378-0240

Toll Free Fax: 877-378-0249

sales@servo2go.com

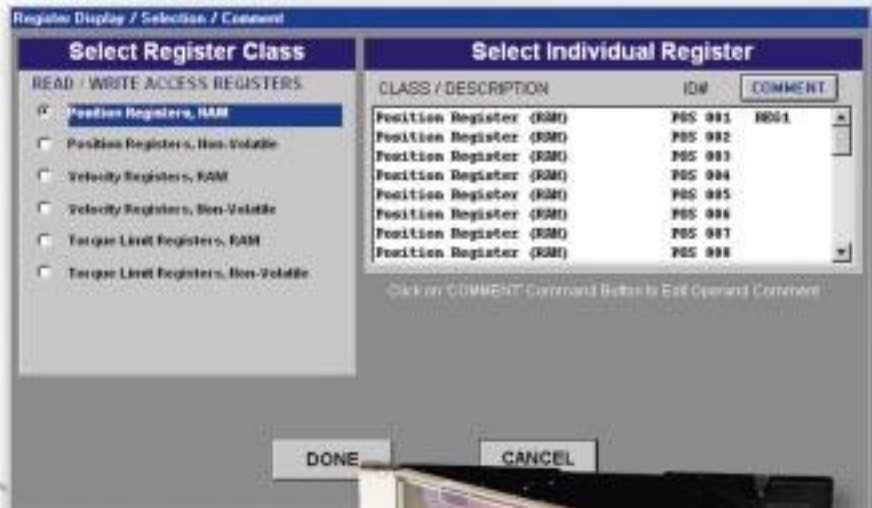
www.servo2go.com



This new release makes **AXIOMPLUS** the most versatile all-in-one motion control system available in its price range

Additional ModBus, Register and PLC Features

- ModBus RTU and ASCII connectivity
- More registers added along with the ability to use them in more instructions.
- Project Save and Load, Upload and Download.
- Automatic prompting for serial port selection and opening
- Sequential programming instructions added:
 - Assign value to a register.
 - Save Position to Register
 - Maximum Torque Limit Parameter Change
 - Software Travel Limits
 - Branch on Position Compare
 - In-Position Band value can now be entered as user units
- PLC instructions added:
 - Register Compare Input Logic
 - Indexer Status Flag for Torque Peak Limit



Sold & Serviced By:

SERVO2GO.com

Toll Free Phone: 877-378-0240

Toll Free Fax: 877-378-0249

sales@servo2go.com

www.servo2go.com