



Micron® True Planetary Gearheads

Quick Selection Guide

Sold & Serviced By:

SERVO2GO.com

Toll Free Phone: 877-378-0240

Toll Free Fax: 877-378-0249

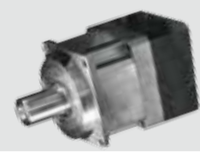
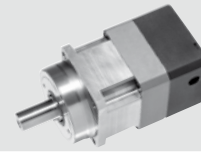
sales@servo2go.com

www.servo2go.com

THOMSON

Linear Motion. Optimized.™

Micron® Quick Selection Guide



Product Line		UltraTRUE	ValueTRUE	
Prefix		UT/UTR	VT/VTR	
Maximum Backlash (for the product life) ⁽¹⁾	[arc/min]	4/5	4/5	
Lower Backlash Option		N	N	
Price Relationship		1.2 ×	0.7 ×	
In-line Frame Sizes / Right Angle Frame Sizes	[mm]	60 - 220 / 60 - 140	60 - 220 / 60 - 140	
In-line Ratio Availability / Right Angle Ratio Availability ⁽²⁾		4:1 - 100:1 / 1:1 - 50:1	4:1 - 100:1 / 1:1 - 50:1	
Double Stage Available		Y	Y	
Torque Capacity Relationship		2.8 ×	2.6 ×	
True Planetary Gearing / Helical Crowned Gearing		Y / Y	Y / Y	
Expected Noise Level	[db]	66	66	
Modification Costs		Very Low	Low	
Lubricated for Life		Y	Y	
Efficiency	[%]	95	95	
Dual and Hollow Shafts Available		N	N	
Housing Material		Stainless and Aluminum	Stainless and Aluminum	
3D CAD Models on Micron Motioneering		Y	Y	
One Piece Output Shaft/Carrier / Internal Gear Machined into Housing		Y / Y	Y / Y	
Maximum input speed ⁽⁶⁾	[RPM]	6000	6000	
ROHS Compliant ⁽⁷⁾ / Case Hardened Gears (HRC60)		Y / Y	Y / Y	
Gearhead Express ⁽⁵⁾		Y	Y	
Low Temperature Grease Available / Food Grade Grease Available / NSF Certified ⁽⁸⁾		Y / Y / N	Y / Y / N	
RediMount Compliant		Y	Y	
Competitor Matrix (maker and model)	Alpha	SP+, SPK+	SP+, SPK+	
	Parker/ Bayside	PS, RS	PS, RS	
	Neugart	PLS, WPLS	PLS, WPLS	
	Apex	AF, AFR	AF, AFR	
	Stober	P, PK, PKX	P, PK, PKX	
	Gam	SPL-W, SPLH-W	SPL-W, SPLH-W	

(1) Backlash is measured at the output shaft, with the input fixed, using 2 % of the rated torque in both directions.

(2) Other ratios available, contact customer support for more information.

(3) Double stage AquaTRUE now available.

(4) Lower backlash, high precision available (8/9 arc-min).

(5) Gearhead express not available in frame sizes larger than 140 mm or dual and hollow shafts.

10 Reasons to Choose Micron® Gearheads

1 RediMount™ – Fast and Error Free Motor Mounting

The unique RediMount system will mount any Micron gearhead to any motor in just three simple steps in less than five minutes!

2 Easy Sizing and Selection with Micron Motioneering

Micron Motioneering is the most accurate and user friendly gearhead sizing and design tool on the market. Try it at www.micronmotioneering.com.

3 Superior Technology

All Micron gears are case hardened to HRC60 for longer life. Our UltraTRUE and ValueTRUE models have a higher helix angle (15 °) than our competitors' helical gearheads resulting in less backlash, smoother and quieter operation and longer life.

4 Fast Deliveries

Micron offers 1 – 2 week standard lead times on all standard catalog products. For quicker shipping, use our 24 hour "Gearhead Express" delivery service which is available for all models for just a 10 % premium!

Sold & Serviced By:

SERVO2GO.com

Toll Free Phone: 877-378-0240

Toll Free Fax: 877-378-0249

sales@servo2go.com

www.servo2go.com

				
EverTRUE	DuraTRUE	NemaTRUE	XTRUE	AquaTRUE
ET	DT/DTR	NT/NTR	XT, XTA	AQT
4/5	8/9	13/15	13/15	13/15
N	N	Y (4)	Y (4)	Y (4)
1.5 ×	1.0 ×	0.5 ×	0.4 ×	1.5 ×
100 - 180 / -	60 - 140 / 60 - 140	60 - 15 (23 - 42) / 60 - 115 (23 - 42)	40 - 160 / -	60 - 160 / -
4:1 - 100:1 / -	3:1 - 100:1 / 1:1 - 500:1	3:1 - 100:1 / 1:1 - 500:1	3:1 - 100:1 / -	3:1 - 100:1 / -
Y	Y	Y	Y	Y (3)
2.8 ×	1.0 ×	0.7 ×	1.1 ×	1.1 ×
Y / N	Y / N	Y / N	Y / N	Y / N
68	68	68	68	68
Low	Very Low	Very Low	Low	Low
Y	Y	Y	Y	Y
95	93	93	93	93
N	Y	N	N	N
Stainless and Aluminum	Anodized Aluminum	Anodized Aluminum	Anodized Aluminum	100 % Stainless
Y	Y	Y	Y	(coming)
Y / Y	Y / N	Y / N	Y / N	Y / N
6000	6000	6000	6000	6000
Y / Y	Y / Y	Y / Y	Y / Y	Y / Y
Y	Y	Y	Y	N
Y / Y / N	Y / Y / N	Y / Y / N	Y / Y / N	Y / Y / Y
Y	Y	Y	Y	N
SP+ High Speed			CP, LP	SG
	PG, RA, PX, RX	NE, NR, PX-N, RX-N	PV	
			PLE	
	AB, ABR, PG	AN, PN, ANR	AE, PE	
		PE-N	EPL, PE	

(6) Speeds greater than 6000 RPM need to be reviewed by application engineering.

(7) ROHS on right angle product is still being confirmed.

(8) The AquaTRUE is certified to NSF/ANSO STD 169.

(9) All products are dimensional drop in replacement, the catalog should be reviewed for length and width details.

5 Lubricated For Life

Micron gearheads require no maintenance and are grease filled. Unlike oil filled units, they can be mounted in any orientation and will never leak.

6 Easy Customization

We welcome modification requests as well as "white paper" custom opportunities. The modular design of our products allows modifications to be easily implemented with small impacts to price and delivery.

Sold & Serviced By:

SERVO2GO Unmatched Product Breadth

Micron has the largest selection of planetary gearheads in the world with over 3000 size and ratio combinations.

Toll Free Phone: 877-378-0240
Toll Free Fax: 877-378-0249
sales@servo2go.com
www.servo2go.com

8 Unmatched Quality

All Micron gearheads are tested through our state of the art end of line tester, making our outgoing quality best in the market.

9 Commitment to New Product Development

Micron was first to launch an all stainless steel, IP69K gearhead for the food and beverage market. The AquaTRUE is designed for the most harsh and corrosive environments.

10 Made in the USA

All Micron Gearheads are manufactured in the USA making us able to respond to emergencies quickly reducing down time for our customers.

servo2go.com

servo2go.com

servo2go.com

servo2go.com

servo2go.com

servo2go.com

servo2go.com

Sold & Serviced By:



Toll Free Phone: 877-378-0240
Toll Free Fax: 877-378-0249

sales@servo2go.com
www.servo2go.com

Micron Quick Selection Guide_BREN-0010-01A | 20150107 TJ
Specifications are subject to change without notice. It is the responsibility of the product user to determine the suitability of this product for a specific application. All trademarks property of their respective owners. © Thomson Industries, Inc. 2014

