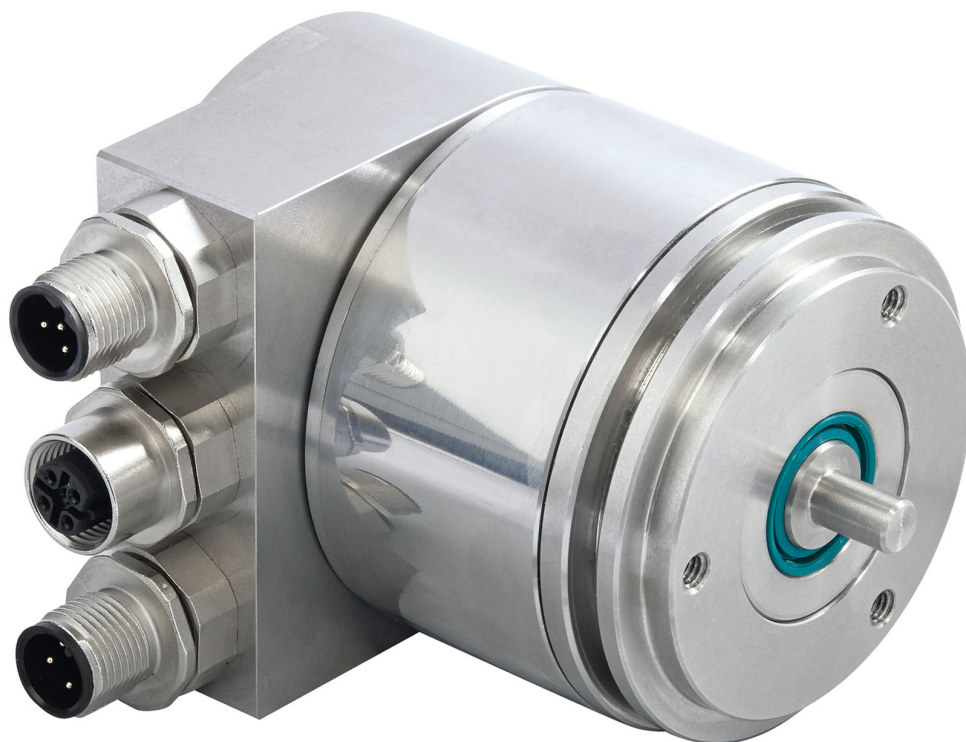




IXARC Absolute Rotary Encoder

OCD-EIB1B-1413-S06V-PRM



Interface

Interface	Profinet
Profile	Profidrive Profile 4.x, Encoder Profile 4.x
Diagnostics	Memory
Features	Boot-Loader, Round Axis, Flashing LEDs
Transmission Rate	10 / 100 Mbit
Interface Cycle Time	≥ 1 ms

POSITAL

FRABA



Programming Functions	Resolution, time base and filter for velocity, preset, counting direction, IP-Address
-----------------------	---

Outputs

Output Driver	Ethernet
---------------	----------

Electrical Data

Supply Voltage	10 - 30 VDC
Current Consumption	≤ 230 mA @ 10 V DC, ≤ 100 mA @ 24 V DC
Power Consumption	≤ 2.5 W
Start-Up Time	< 1 s
Reverse Polarity Protection	Yes
Short Circuit Protection	Yes
EMC: Emitted Interference	DIN EN 61000-6-4
EMC: Noise Immunity	DIN EN 61000-6-2
MTTF	65 years @ 40 °C

Sensor

Technology	Optical
Resolution Singleturn	13 bit
Resolution Multiturn	14 bit
Multiturn Technology	Mechanical Gearing (no Battery)
Accuracy (INL)	±0.0220° (14 - 16 bit), ±0.0439° (≤13 bit)
Code	Binary

Environmental Specifications

Protection Class (Shaft)	IP66/IP67
Protection Class (Housing)	IP66/IP67
Operating Temperature	- +85 °C (+185 °F)
Storage Temperature	-40 °C (-40 °F) - +85 °C (+185 °F)
Humidity	98% RH, no condensation

Mechanical Data

Housing Material	Stainless Steel V2A (1.4305, 303)
Housing Coating	No Coating
Flange Type	Synchro, ø 58 mm (S)
Flange Material	Stainless steel V2A (1.4305; 303)

Data Sheet
Printed at 8-10-2020 18:10

POSITAL

FRABA



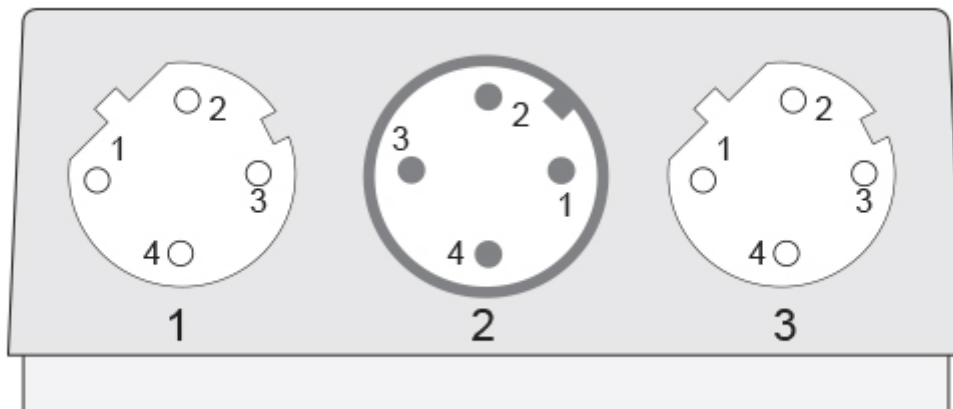
Shaft Type	Solid, Length = 10 mm
Shaft Diameter	∅ 6 mm (0.24")
Shaft Material	Stainless Steel V2A (1.4305, 303)
Max. Shaft Load	Axial 40 N, Radial 110 N
Minimum Mechanical Lifetime (10 ⁸ revolutions with Fa/Fr)	400 (20 N / 40 N)
Rotor Inertia	≤ 30 gcm ² [≤ 0.17 oz-in ²]
Friction Torque	≤ 5 Ncm @ 20 °C, (7.1 oz-in @ 68 °F)
Max. Permissible Mechanical Speed	≤ 3000 1/min
Shock Resistance	≤ 100 g (half sine 6 ms, EN 60068-2-27)
Permanent Shock Resistance	≤ 10 g (half sine 16 ms, EN 60068-2-29)
Vibration Resistance	≤ 10 g (10 Hz - 1000 Hz, EN 60068-2-6)
Length	84 mm (3.31")
Weight	840 g (1.85 lb)

Electrical Connection

Connection Orientation	Radial
Connector 1	M12, Female, 4 pin, d coded
Connector 2	M12, Male, 4 pin, a coded
Connector 3	M12, Female, 4 pin, d coded

Product Life Cycle

Product Life Cycle	Established
Approval	CE



Connection Plan

SIGNAL

CONNECTOR

PIN NUMBER

Data Sheet

Printed at 8-10-2020 18:10



Tx+	Connector 1	1
Rx+	Connector 1	2
Tx-	Connector 1	3
Rx-	Connector 1	4
Power Supply	Connector 2	1
Not Connected	Connector 2	2
GND	Connector 2	3
Not Connected	Connector 2	4
Tx+	Connector 3	1
Rx+	Connector 3	2
Tx-	Connector 3	3
Rx-	Connector 3	4

Connector-View on Encoder Dimensional Drawing

[2D Drawing](#)

Accessories

Connectors & Cables

- 2m PUR Cable, 4pin, D-Coded, m
- M12, 4pin A-Coded, Female
- 10m PUR Cable, 4pin, D-Coded, m
- 10m PVC Cable, 4pin, D-Coded, m
- 2m PVC Cable, 4pin, D-Coded, m
- 5m PVC Cable, 4pin, D-Coded, m
- POS M12 5pin-A Female+5m PUR Cable
- POS M12 5pin-A Female+2m PUR Cable
- POS M12 5pin-A Female+10m PUR Cable
- M12, 4pin D-Coded, Male
- M12, 5pin A-Coded, Female
- 5m PUR Cable, 4pin, D-Coded, m

More

Couplings

- Coupling Bellow Type-06-06
- Coupling Bellow Type-06-10
- Coupling Bellow Type-06-08
- Coupling Bellow Type-06-(3/8")
- Coupling Bellow Type-06-(1/4")
- Coupling Jaw Type-06-06
- Coupling Jaw Type-06-10
- Coupling Jaw Type-06-08
- Coupling Jaw Type-06-12

Data Sheet

Printed at 8-10-2020 18:10

POSITAL

FRABA



Coupling Jaw Type-06-(1/4")
Coupling Jaw Type-06-(3/8")
Coupling Disc Type-06-06
Coupling Disc Type-06-10
More
Adapter Flanges
Mounting Bracket for Synchro Flange w/ fixtures
Clamping Rings
Clamp Disc w/ Eccentric Hole-4pcs
Clamp Disc w/ Centred Hole-4pcs

Got questions? Need an individual solution? We are here to help!

Sold & Serviced By:

 Canadian and International Sales
ELECTROMATE
877-737-8698
sales@electromate.com
www.electromate.com

U.S. Sales
SERVO2GO.com
877-378-0240
sales@servo2go.com
www.servo2go.com

The picture and drawing are for general presentation purposes only. Please refer to the "Download" section for detailed technical drawings. All dimension in [inch] mm. © FRABA B.V., All rights reserved. We do not assume responsibility for technical inaccuracies or omissions. Specifications are subject to change without notice.