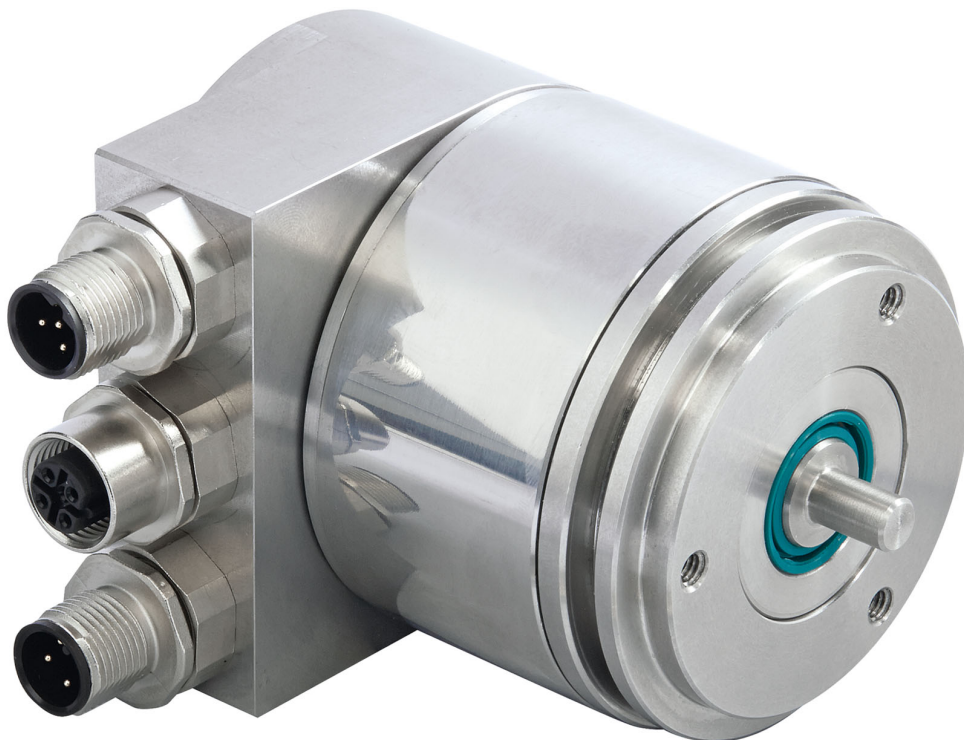




## IXARC Absolute Rotary Encoder

OCD-EC00B-1413-S06V-PRM



### Interface

Interface	Ethercat
Profile	CoE (CANopen over EtherCAT, DS-301+DS-406)
Diagnostics	OptoAsic, Memory, LED
Features	Boot-Loader, Round Axis
Transmission Rate	10 / 100 Mbit
Interface Cycle Time	$\geq 62.5 \mu\text{s}$
Programming Functions	Resolution, preset, counting direction

Data Sheet

Printed at 7-10-2020 14:10

# POSITAL

## FRABA



### Outputs

Output Driver	Ethernet
---------------	----------

### Electrical Data

Supply Voltage	10 - 30 VDC
Current Consumption	$\leq 230$ mA @ 10 V DC, $\leq 100$ mA @ 24 V DC
Power Consumption	$\leq 2.5$ W
Start-Up Time	$< 1$ s
Reverse Polarity Protection	Yes
Short Circuit Protection	Yes
EMC: Emitted Interference	DIN EN 61000-6-4
EMC: Noise Immunity	DIN EN 61000-6-2
Electrical Lifetime	$>10^5$ h

### Sensor

Technology	Optical
Resolution Singleturn	13 bit
Resolution Multiturn	14 bit
Multiturn Technology	Mechanical Gearing (no Battery)
Accuracy (INL)	$\pm 0.0220^\circ$ (14 - 16 bit), $\pm 0.0439^\circ$ ( $\leq 13$ bit)
Code	Binary

### Environmental Specifications

Protection Class (Shaft)	IP66/IP67
Protection Class (Housing)	IP66/IP67
Operating Temperature	- +85 °C (+185 °F)
Storage Temperature	-40 °C (-40 °F) - +85 °C (+185 °F)
Humidity	98% RH, no condensation

### Mechanical Data

Housing Material	Stainless Steel V2A (1.4305, 303)
Housing Coating	No Coating
Flange Type	Synchro, $\varnothing 58$ mm (S)
Flange Material	Stainless steel V2A (1.4305; 303)
Shaft Type	Solid, Length = 10 mm
Shaft Diameter	$\varnothing 6$ mm (0.24")
Shaft Material	Stainless Steel V2A (1.4305, 303)

Data Sheet

Printed at 7-10-2020 14:10

# POSITAL

## FRABA



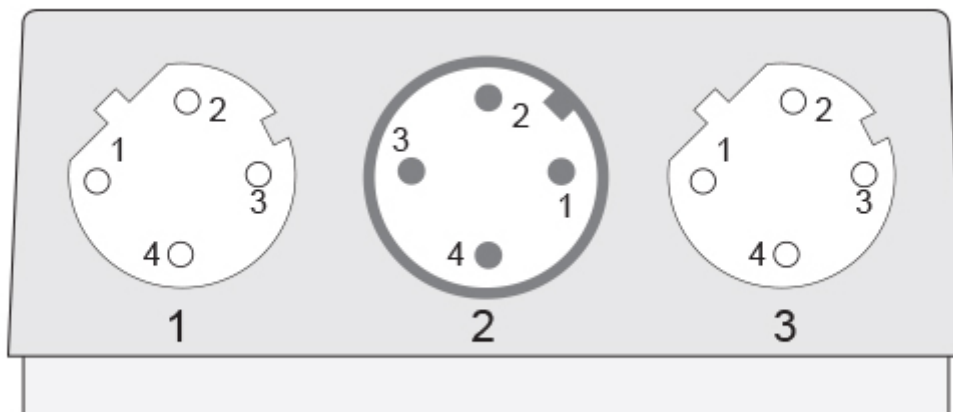
Max. Shaft Load	Axial 40 N, Radial 110 N
Minimum Mechanical Lifetime (10 <sup>8</sup> revolutions with Fa/Fr)	400 (20 N / 40 N)
Rotor Inertia	≤ 30 gcm <sup>2</sup> [≤ 0.17 oz-in <sup>2</sup> ]
Friction Torque	≤ 5 Ncm @ 20 °C, (7.1 oz-in @ 68 °F)
Max. Permissible Mechanical Speed	≤ 3000 1/min
Shock Resistance	≤ 100 g (half sine 6 ms, EN 60068-2-27)
Permanent Shock Resistance	≤ 10 g (half sine 16 ms, EN 60068-2-29)
Vibration Resistance	≤ 10 g (10 Hz - 1000 Hz, EN 60068-2-6)
Length	84 mm (3.31")
Weight	840 g (1.85 lb)

### Electrical Connection

Connection Orientation	Radial
Connector 1	M12, Female, 4 pin, d coded
Connector 2	M12, Male, 4 pin, a coded
Connector 3	M12, Female, 4 pin, d coded

### Product Life Cycle

Product Life Cycle	Established
Approval	CE



### Connection Plan

SIGNAL	CONNECTOR	PIN NUMBER
Tx+	Connector 1	1
Rx+	Connector 1	2
Tx-	Connector 1	3
Rx-	Connector 1	4

Data Sheet

Printed at 7-10-2020 14:10



Power Supply	Connector 2	1
Not Connected	Connector 2	2
GND	Connector 2	3
Not Connected	Connector 2	4
Tx+	Connector 3	1
Rx+	Connector 3	2
Tx-	Connector 3	3
Rx-	Connector 3	4

### Connector-View on Encoder **Dimensional Drawing**

#### [2D Drawing](#)

#### **Accessories**

##### Connectors & Cables

2m PUR Cable, 4pin, D-Coded, m  
M12, 4pin A-Coded, Female  
10m PUR Cable, 4pin, D-Coded, m  
10m PVC Cable, 4pin, D-Coded, m  
2m PVC Cable, 4pin, D-Coded, m  
5m PVC Cable, 4pin, D-Coded, m  
POS M12 5pin-A Female+5m PUR Cable  
POS M12 5pin-A Female+2m PUR Cable  
POS M12 5pin-A Female+10m PUR Cable  
M12, 4pin D-Coded, Male  
M12, 5pin A-Coded, Female  
5m PUR Cable, 4pin, D-Coded, m  
More

##### Couplings

Coupling Bellow Type-06-06  
Coupling Bellow Type-06-10  
Coupling Bellow Type-06-08  
Coupling Bellow Type-06-(3/8")  
Coupling Bellow Type-06-(1/4")  
Coupling Jaw Type-06-06  
Coupling Jaw Type-06-10  
Coupling Jaw Type-06-08  
Coupling Jaw Type-06-12  
Coupling Jaw Type-06-(1/4")  
Coupling Jaw Type-06-(3/8")  
Coupling Disc Type-06-06

Data Sheet

Printed at 7-10-2020 14:10

# POSITAL

---

## FRABA



Coupling Disc Type-06-10

More

Adapter Flanges

Mounting Bracket for Synchro Flange w/ fixtures

Clamping Rings

Clamp Disc w/ Eccentric Hole-4pcs

Clamp Disc w/ Centred Hole-4pcs

### Contact

Sold & Serviced By:



*Canadian and International Sales*

**ELECTROMATE**

**877-737-8698**

[sales@electromate.com](mailto:sales@electromate.com)

[www.electromate.com](http://www.electromate.com)

*U.S. Sales*

**SERVO2GO.com**

**877-378-0240**

[sales@servo2go.com](mailto:sales@servo2go.com)

[www.servo2go.com](http://www.servo2go.com)

The picture and drawing are for general presentation purposes only. Please refer to the "Download" section for detailed technical drawings. All dimension in [inch] mm. © FRABA B.V., All rights reserved. We do not assume responsibility for technical inaccuracies or omissions. Specifications are subject to change without notice.

Data Sheet

Printed at 7-10-2020 14:10