

















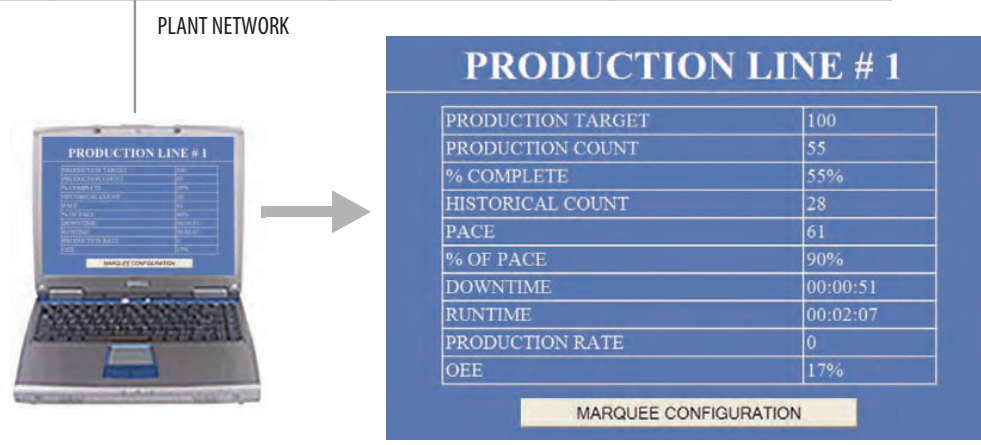






**SOFTWARE**

Display, Monitor, and Collect Production Data without Installing any Software



- DATA SOURCE**
- GOAL
  - TOTAL COUNT
  - BAD COUNT
  - GOAL
  - GOAL-COUNT
  - % BAD
  - % COMPLETE
  - TARGET COUNTER
  - % OF TARGET COUNTER
  - HISTORICAL COUNT
  - DOWNTIME
  - RUN TIME
  - SETUP TIME
  - USER MODE TIME
  - HISTORICAL DOWNTIME
  - CURRENT CYCLE TIME
  - LAST CYCLE TIME
  - SHORTEST CYCLE TIME
  - LONGEST CYCLE TIME
  - AVERAGE CYCLE TIME
  - RATE / PER SECOND
  - RATE / PER MINUTE
  - RATE / PER HOUR
  - Takt TIME ELAPSED
  - Takt TIME REMAINING
  - QUALITY
  - MACHINE AVAILABILITY
  - MACHINE PERFORMANCE
  - OEE
  - MACHINE STATE
  - MODBUS/TCP reg. 40131

**Production Data Variables**

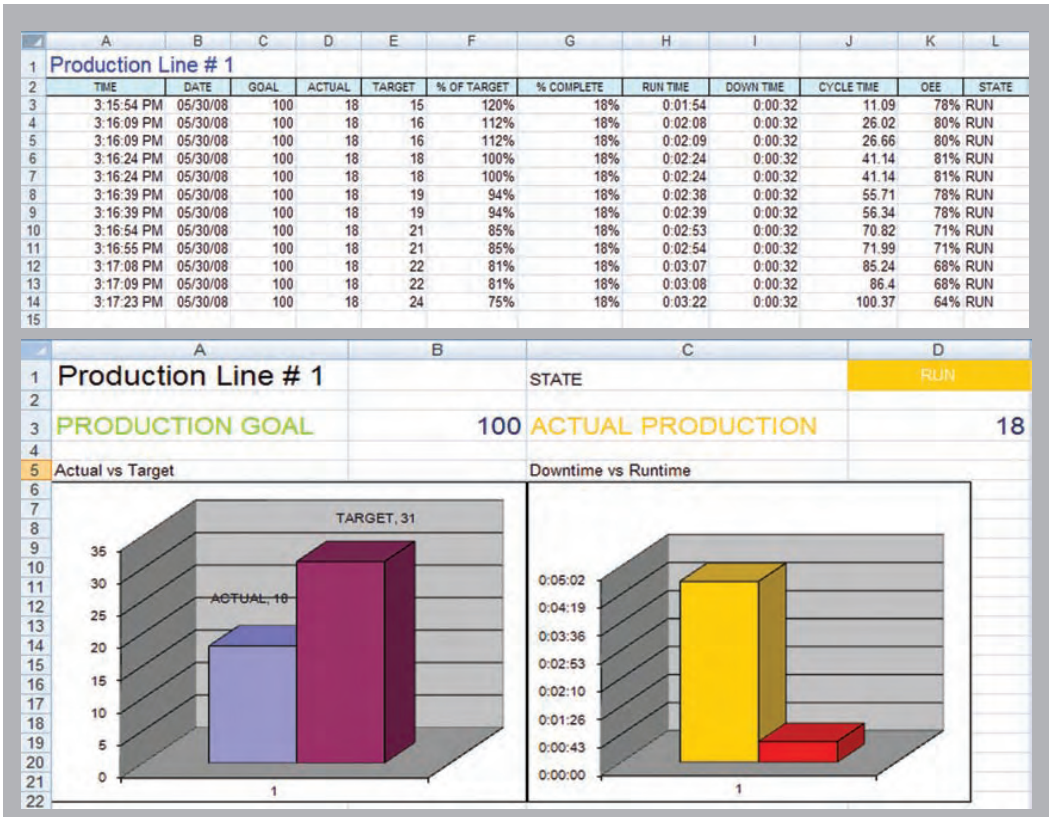
**"No Code to Program"**

**"No Formulas to Write"**

**PRODUCTION LINE # 1**

PRODUCTION TARGET	100
PRODUCTION COUNT	55
% COMPLETE	55%
HISTORICAL COUNT	28
PACE	61
% OF PACE	90%
DOWNTIME	00:00:51
RUNTIME	00:02:07
PRODUCTION RATE	0
OEE	17%

MARQUEE CONFIGURATION

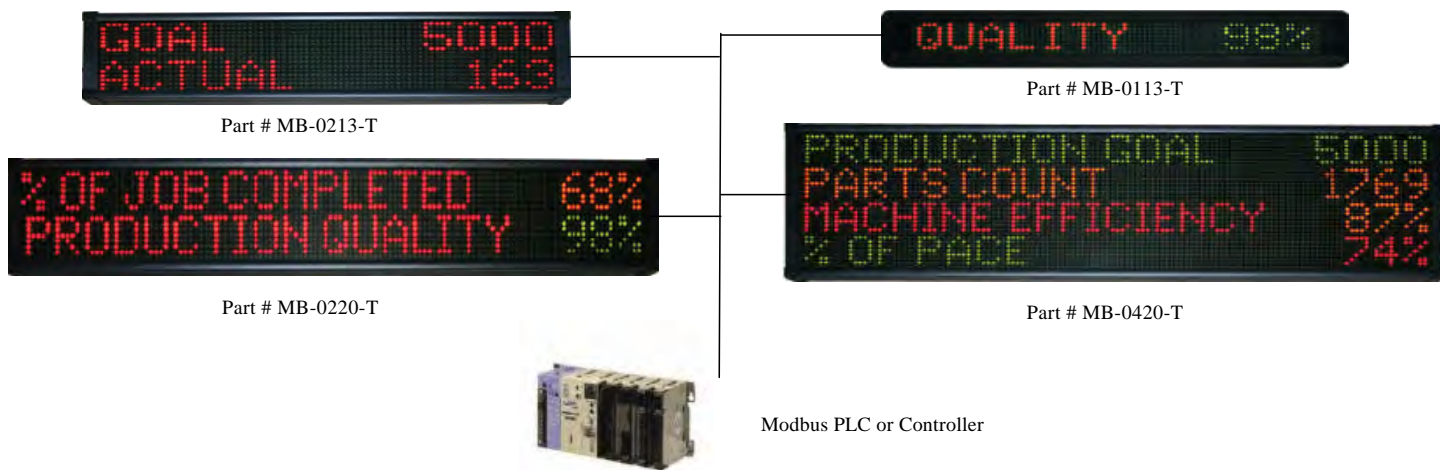


Production Data Collected and Analyzed with 3rd Party Spreadsheet

PART NUMBER MODEL	DISPLAY TYPE	DIMENSIONS (W x H x D)
PPM-0106-LED (1 line, 6 digit)	Tri-Color LED	96mm x 48mm x 125mm
PPM-0216-LCD (2 line, 16 character)	Liquid Crystal	96mm x 48mm x 125mm
PPM-0216-VF (2 line, 16 character)	Vacuum Fluorescent	96mm x 48mm x 125mm



## Modbus MARQUEE SERIES (Modbus TCP )



### PRODUCT DESCRIPTION

The Modbus Marquee revolutionizes the industrial market on how a marquee sign should connect and communicate on the Modbus network. The Modbus Marquee has a built in WEB server, eliminating the need to install software to program the marquee sign. Setup of the display is as simple as opening a WEB browser on your computer and entering the IP address of the marquee sign. With its fully integrated package, the Modbus Marquee allows the user to configure and broadcast plc data and message information without programming communication blocks within the ladder logic code of the plc. The product's innovation allows the user to set up the functionality of the marquee sign and simply connect to a Modicon PLC. The messages displayed on the marquee can be alarms, machine performance, or production data. These messages are selected and displayed through internal registers from the PLC. The format of these registers can be any combination of bits, words, or strings. The Modbus Marquee has an additional ethernet port built into the marquee sign. This second port gives the marquee the flexibility to broadcast information to any computer on the plant network through the web server. This computer can monitor production data and collect real time information from the plant floor by simply entering the IP address of the marquee. Also, third party spreadsheets can be used to monitor and store the information broadcasted by the marquee sign. With no software to install, the Modbus Marquee stands alone as the new innovative way for a marquee sign to communicate on the Modbus network.

### PRODUCT FEATURES

- **NO SOFTWARE to INSTALL !!!** Web based setup
- Modbus TCP protocol
- Direct register access to plc from marquee sign
- 2nd ethernet port for data collection to PC
- Monitor plc registers through built-in web browser
- Broadcast alarm messages from the PLC
- Backup and restore configuration of marquee sign
- Collection of real time data from plant floor

### PRODUCT SPECIFICATIONS

- 1, 2 and 4 line alphanumeric display
- 13 and 20 character width
- Bright tri-color LED characters
- Operating temperature 0-55 C
- 100,000 hour rated LED life
- Metal housing
- IR programming port
- Mounting hardware included

Sold & Serviced By:



Toll Free Phone (877) SERV098

Toll Free Fax (877) SERV099

[www.electromate.com](http://www.electromate.com)

[sales@electromate.com](mailto:sales@electromate.com)

Upon entering the IP address of the marquee sign from the web browser, the monitor page is displayed. This web page is where user configured process values and variable data can be viewed.

## FACTORYplc MARQUEE MONITOR PAGE

PRODUCTION GOAL	5392
PRODUCTION COUNT	3930
DOWNTIME	0
MACHINE EFFICIENCY - OEE	0.0
% COMPLETE	0.0
HISTORICAL PRODUCTION COUNT	0
HISTORICAL DOWNTIME	0
VARIABLE DATA 7	0
VARIABLE DATA 8	0
VARIABLE DATA 9	0

Apply Changes

MARQUEE CONFIGURATION

With proper authorization, the user can enter into the marquee sign setup menu. This web page is where the user has access to the marquee configuration pages used to set up the marquee sign.



By selecting the “Edit Marquee Messages” button, the user can set up the message text, font size, color, and functionality of the message to be displayed on the marquee sign.

## MESSAGE EDIT PAGE

MSG #	MSG TEXT	FONT	LINE	COLOR	FLASH	MINIMUM DISPLAY TIME
1	OPERATION COMPLETE - INSERT NEW PART	2"	LINE 1	VD 0	■	2 SEC
2	CALL MAINTENANCE !!!!!	4"	LINE 1	RED	■	10 SEC
3	JOB COMPLETED, BATCH COUNT REACHED	2"	LINE 1	VD 1	■	2 SEC
4	TEMPERATURE NORMAL	2"	LINE 1	GREEN	■	2 SEC
5	CONVEYOR STOPPED	2"	LINE 1	YELLOW	■	2 SEC
6	PART JAMMED - RESET MACHINE	2"	LINE 1	RED	■	2 SEC
7	SAFETY MEETING 2:00 P.M.	2"	LINE 2	GREEN	■	30 SEC
8	ASSEMBLY STAGE 3	2"	LINE 1	GREEN	■	2 SEC
9	E-STOP PUSHED - PROCESS STOPPED	2"	LINE 2	RED	■	5 SEC
10	CRITICAL ALARM - PROCESS HALTED	2"	LINE 2	RED	■	5 SEC

APPLY CHANGES

MESSAGES 11-20

MESSAGES 21-30

MESSAGES 31-40

MESSAGES 41-50

MESSAGES 51-60

MESSAGES 61-70

MESSAGES 71-80

MESSAGES 81-90

MESSAGES 91-100

MARQUEE SETUP MENU

By selecting the “Variable Data Configuration” button, the user can set up the variable data from the plc to be displayed on the marquee sign. The format of the variable data is entered here.

## VARIABLE DATA CONFIGURATION

MAIN PAGE TITLE : FACTORYplc MARQUEE MONITOR PAGE

### MONITOR PAGE CONFIGURATION

DATA	DATA DESCRIPTION	# DIGITS	PRECISION	FORMAT	JUSTIFY	COLOR	MONITOR DISPLAY
0	PRODUCTION GOAL	5	0	LEADING SPACES	RIGHT	RED	■
1	PRODUCTION COUNT	5	0	LEADING SPACES	RIGHT	GREEN	■
2	DOWNTIME	5	0	LEADING SPACES	RIGHT	GREEN	■
3	MACHINE EFFICIENCY - OEE	3	1	LEADING SPACES	RIGHT	YELLOW	■
4	% COMPLETE	3	1	LEADING SPACES	RIGHT	FLASH RED	■
5	HISTORICAL PRODUCTION COUNT	5	0	LEADING SPACES	RIGHT	FLASH GREEN	■
6	HISTORICAL DOWNTIME	5	0	LEADING SPACES	RIGHT	FLASH YELLOW	■
7	VARIABLE DATA 7	5	0	LEADING SPACES	RIGHT	RED	■
8	VARIABLE DATA 8	5	0	LEADING SPACES	RIGHT	RED	■
9	VARIABLE DATA 9	5	0	LEADING SPACES	RIGHT	RED	■

Apply Changes

RETURN TO SETUP MENU

PART NUMBER MODEL

DIMENSIONS (HxWxD)

WEIGHT

MB-0113-T (1 line, 13 character, tricolor)

4.5" x 26.0" x 3.75"

2.8 LBS.

MB-0213-T (2 line, 13 character, tricolor)

6.25" x 25.5" x 3.75"

10.8 LBS.

MB-0220-T (2 line, 20 character, tricolor)

6.25" x 39.75" x 3.75"

17.9 LBS.

MB-0420-T (4 line, 20 character, tricolor)

11.0" x 39.75" x 3.75"

26.2 LBS.

Sold & Serviced By:



Toll Free Phone (877) SERV098

Toll Free Fax (877) SERV099

www.electromate.com

sales@electromate.com