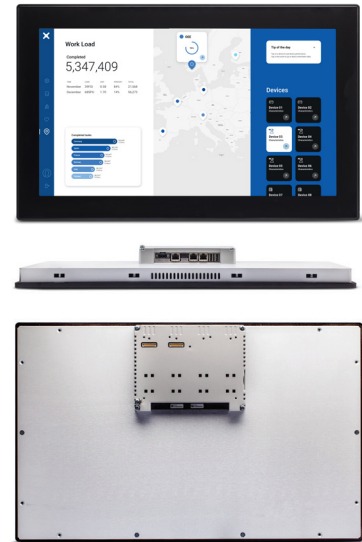


# eX721M | Web HMI - Tech Note

---

## Web HMI 21,5" TFT, 1920x1080, PCAP Touch, 3x Ethernet, Web browser

- Chromium based HTML5 Browser
- Easy to use browser setting application
- 21.5" TFT color display, resolution 1920x1080 pixel
- Projected capacitive touchscreen. True glass design. Multitouch operation.
- Operating Temperature -20°C to +60°C
- IECEx, ATEX, DNV-GL, cULus, cULus: Class 1 Div 2



## Highlights

eX700M Web HMI products combine state-of-the-art connectivity features and top browsing performance in a great design. They are the ideal choice for all demanding IoT edge applications in factory, marine and building automation where powerful and performing HTML5 web browser is needed.

The glass projected capacitive touchscreen and the brilliant 21.5 widescreen display with resolution of 1920x1080 guarantee great optical performance; with the support of multitouch gesture programming they can create the most natural human interfaces.

eX700M Web HMI products include a Chromium based HTML5 browser supporting kiosk mode operation. Supports Corvina Cloud secure connectivity with full network separation.

**Sold & Serviced By:**



Canadian and International Sales

**ELECTROMATE**

877-737-8698

[sales@electromate.com](mailto:sales@electromate.com)

[www.electromate.com](http://www.electromate.com)

U.S. Sales

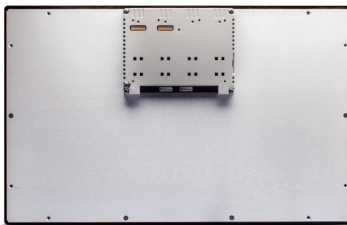
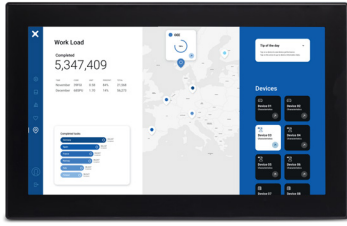
**SERVO2GO.com**

877-378-0240

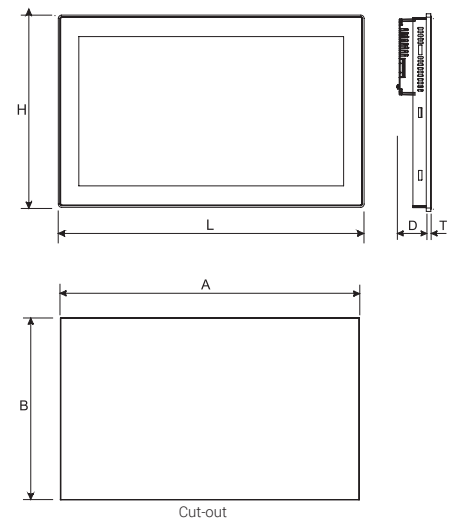
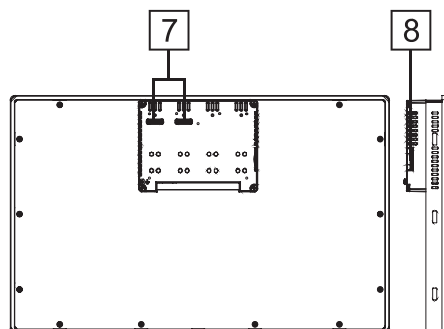
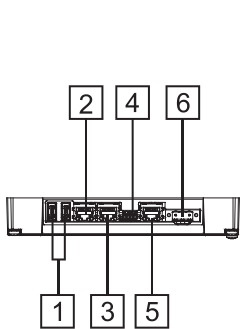
[sales@servo2go.com](mailto:sales@servo2go.com)

[www.servo2go.com](http://www.servo2go.com)

# eX721M Web HMI - Technical Data



System Resources	
Display - Colors	21,5" TFT LED - 16M
Resolution	1920x1080, full HD
Brightness	300 cd/m2
Dimming	Yes
Touchscreen	True Glass Projected Capacitive, Multitouch
CPU	64-bit RISC quad core - 1.6 GHz
Operating System	Linux
Flash	8 GB
RAM	2 GB
FRAM	64 KB
RTC-Clock, RTCBack-up, Buzzer	Yes
Interface	
Ethernet port	3 (port 0 - 10/100/1000, port 1 - 10/100, port 2 - 10/100)
USB port	2 (Host V2.0, max. 500 mA)
Serial port	1 (RS-232, RS-485, RS-422, software configurable). Max 3 serial ports using plug-in modules.
SD card	Yes
Expansion	2 slot for plug in modules
Ratings	
Power supply	24 Vdc (10 to 32 Vdc)
Current Consumption	1.7 A at 24 Vdc (max.)
Input Protection	Electronic
Battery	Rechargeable Lithium battery, not user-replaceable
Environment Conditions	
Operating Temperature	-20° to +60 °C (vertical installation). Plug-in and USB devices may limit max temperature to +50 °C
Storage Temperature	-20°C to +70°C
Operating / Storage Humidity	5-85% RH, non condensing
Protection Class	IP66 (front), IP20 (rear) - Type: 12, 4X
Dimensions and Weights	
Faceplate LxH	552x347 mm (21.7x13.66")
Cutout AxB	541x336 mm (21.3x13.22")
Depth D+T	56+8 mm (2.20+0.31")
Weight	6.1 Kg
Approvals	
CE	Electromagnetic Compatibility Directive 2014/30/EU (EMC)
ATEX	Zone 2/22: II 3 G Ex ec IIC T5...T4 Gc, II 3 D Ex tc IIIC T95°C Dc -20°C ≤ Tamb ≤ +60°C or 0°C ≤ Tamb ≤ +50°C
IECEX	Zone 2/22: Ex ec IIC T5...T4 Gc, Ex tc IIIC T95°C Dc -20°C ≤ Tamb ≤ +60°C or 0°C ≤ Tamb ≤ +50°C
UL	cULus: UL61010-1 / UL61010-2-201
UL	cULus: Class 1 Div 2
DNV	Yes
RCM	Yes



- 1 USB ports 1 and 2
- 2 Ethernet port 2 (10/100 Mb)
- 3 Ethernet port 1 (10/100 Mb)
- 4 Serial port
- 5 Ethernet port 0 (10/100/1000 Mb)
- 6 Power supply
- 7 2 Expansion slots for plugin modules
- 8 SD Card slot

## Ordering Information

Model	Part Number	Description
eX721M Web	+EX721MU5PW	Web HMI 21.5" TFT 1920x1080, PCAP Touchscreen, 8 GB Flash memory, 3x Ethernet ports, Web browser