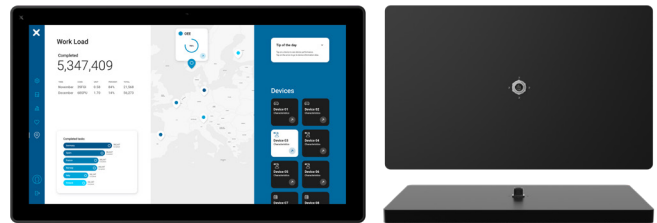
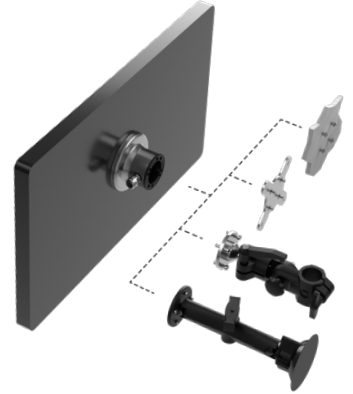


JSmart721M Tech-Note

21.5" TFT, PCAP Touch, PoE Ethernet, Wi-Fi, NFC, JMobile runtime

- 21 inch screen, resolution 1920x1080 pixel
- PCAP Touchscreen Multitouch
- 10/100 Ethernet port PoE
- Wi-Fi Connection and NFC Device
- 64 bit quad core CPU
- Full IP protection; ideal for mounting-arm installation
- Operating temperature -20°C to +55°C
- UL 61010-1 approval
- Dedicated HMI support arm system
- Includes environment and motion sensors



Highlights

JSmart700M feature a powerful 64 bit quad core CPU that ensures JMobile applications are running in their optimal environment for the highest performance.

The special features of JSmart721M are the sleek and elegant design, the 21 inch multi-touch capacitive touchscreen display with robust glass front, and the ability to connect the device via a single Power-over-Ethernet (PoE) cable. This technology allows maximum flexibility and efficiency in installation as well as full IP67 protection with the use of appropriate accessories and connectors.

The Wi-Fi interface improves the integration capability of the device while NFC expands the possible applications.

JSmart700M is the ideal choice for the most demanding IIoT edge applications in factory, marine and building automation where powerful and performing HMI is needed for installation as close as possible to human operators.

Sold & Serviced By:



Canadian and International Sales

ELECTROMATE

877-737-8698

sales@electromate.com

www.electromate.com

U.S. Sales

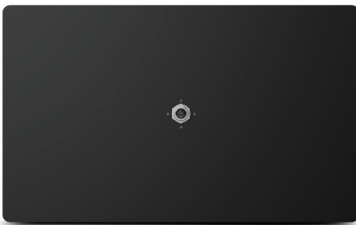
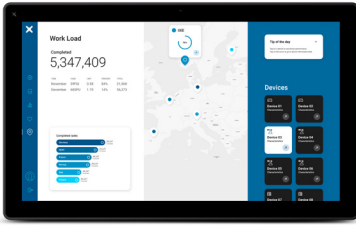
SERVO2GO.com

877-378-0240

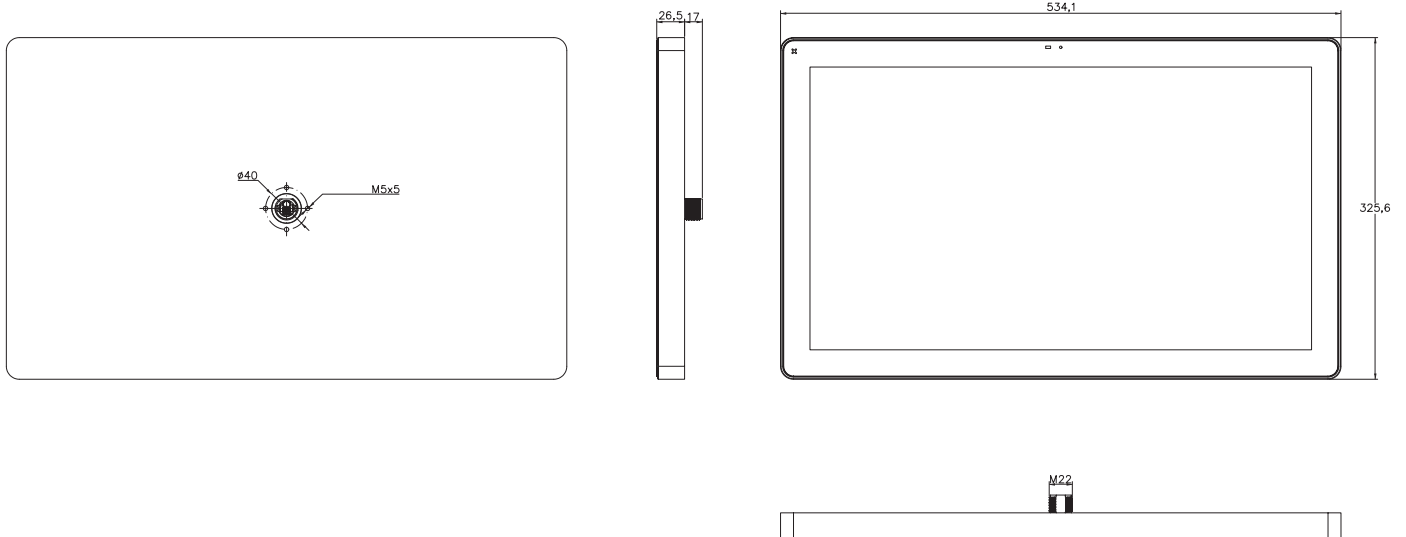
sales@servo2go.com

www.servo2go.com

JSmart721M - Technical Data



System Resources	
Display - Colors	21.5" TFT - 16M
Resolution	1920x1080
Brightness	400 cd/m ²
Dimming	Yes
Touchscreen	Projected Capacitive, Multitouch
CPU	64-bit RISC Quad core - 1.6 GHz
Operating System	Linux
Flash	8 GB
RAM	2 GB
FRAM	64 KB
Real Time Clock, RTC Back-up	Yes
Interface	
Ethernet port	10/100 PoE
USB port	1 (Host V2.0, max. 500 mA, available with special cable)
LED	1 RGB
Sensors	Temperature, 3-Axis Accelerometer
Buzzer	Yes
NFC	ISO/IEC 14443A
Wi-Fi	IEEE 802.11a/b/g
Ratings	
Power supply	IEEE 802.3bt 4PPoE
Power Consumption	35W max.
Battery	Rechargeable Lithium battery, not user-replaceable
Environment Conditions	
Operating Temperature	-20° to +55° C (vertical installation)
Storage Temperature	-30°C to +80°C
Operating / Storage Humidity	5-85% RH, non-condensing
Protection Class	IP67 (requires appropriate accessories and cables) - Type: 1, 12, 4x
Dimensions and Weights	
Faceplate LxH	534.1x325.6 mm (21.02x 12.81")
Depth D	26.5 mm (1.04")
Weight	6.0 Kg
Approvals	
CE	Radio Equipment Directive 2014/53/EU (RED)
UL	cULus: UL61010-1 / UL61010-2-201
UL	cULus: Class 1 Div 2
RCM	Yes



Ordering Information

Model	Part Number	Description
JSmart721M	+JS721GE2U5P1	HMI 21.5" TFT, 1920x1080, PCAP Touch, PoE Ethernet, Wi-Fi, NFC, JMobile runtime