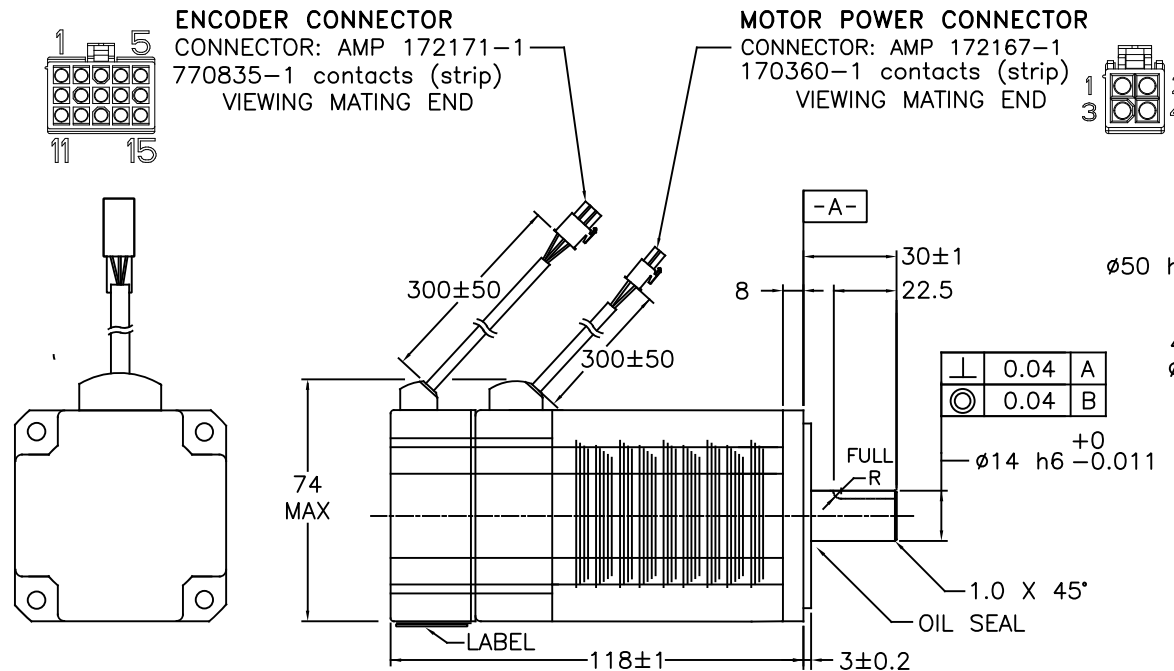
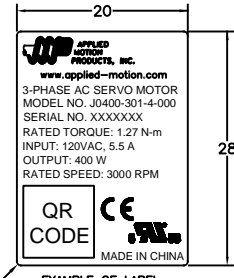
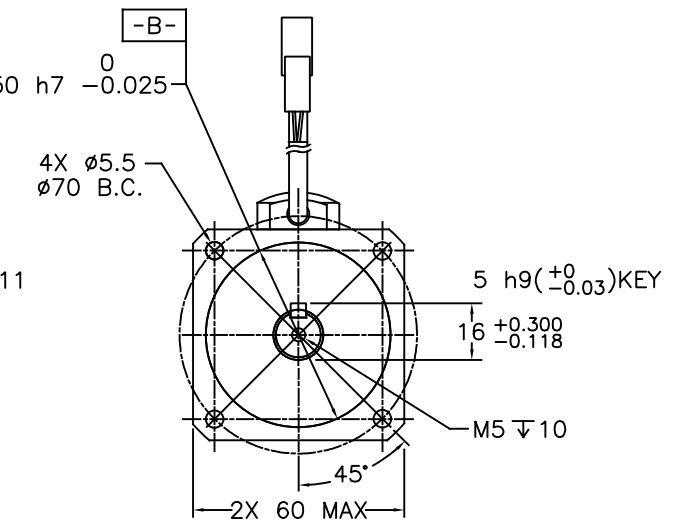


REVISIONS			
REV	DESCRIPTION	DATE	APPROVED
A	INITIAL RELEASE ECO 7005	6/10/14	J KORDIK
B	ADD LABEL/SPEC CHG ECO 7060	9/15/14	J KORDIK
C	REVISE SPEC PER ECO 7205	5/8/15	J Kordik
D	ADD UL TO LABEL PER ECO 7330	10/12/15	J KORDIK
E	SPECS REVISED PER ECO 7510	10/12/15	J KORDIK



⊥	0.04	A
⊙	0.04	B



R 1.5  
4PLCS

ENCODER CONNECTION TABLE		
PIN	LEAD COLOR	SIGNAL
1	RED	+5V
2	BLACK	GROUND
3	BROWN	U+
4	BROWN/BLACK	U-
5	GRAY	V+
6	GRAY/BLACK	V-
7	WHITE	W+
8	WHITE/BLACK	W-
9	BLUE/BLACK	A+
10	BLUE	A-
11	GREEN	B+
12	GREEN/BLACK	B-
13	YELLOW	Z+
14	YELLOW/BLACK	Z-
15	SHIELD	SHIELD

MOTOR CONNECTION TABLE		
PIN	LEAD COLOR	SIGNAL
1	RED	PHASE U
2	YELLOW	PHASE V
3	BLUE	PHASE W
4	YELLOW/GREEN	GROUND

- NOTES: UNLESS OTHERWISE SPECIFIED
1. A SHAFT SEAL IS SHIPPED WITH MOTOR, BUT NOT INSTALLED.
  2. TIMING LOGIC IS CCW AS VIEWED FROM FRONT SHAFT.
  3. MOTOR IS IP65, EXCEPT SHAFT OPENING AND CABLE CONNECTOR.
  4. INSTALL INDOORS, AWAY FROM DIRECT SUNLIGHT AND FLAMMABLE GASES.
  5. 1000M MAX ALTITUDE.

TOLERANCES		THIRD ANGLE PROJECTION		APPLIED MOTION PRODUCTS, INC.	
DECIMALS: MM (INCH)				<b>AC SERVO MOTOR</b>	
X.XXX = ±0.013 (.005)					
X.XX = ±0.25 (.01)		APPROVALS	DATE	B DWG NO. <b>J0400-301-4-000</b>	REV <b>E</b>
X.X = ±2.5 (0.1)		DRAWN R.JONEZ	5/19/14		
ANGLES: MACH. = ±.5° CHAM. = ±.5°		CHECKED			
COMPUTER DATA BASE DRAWING		APPROVED		SCALE: NONE	SHEET 1 OF 2

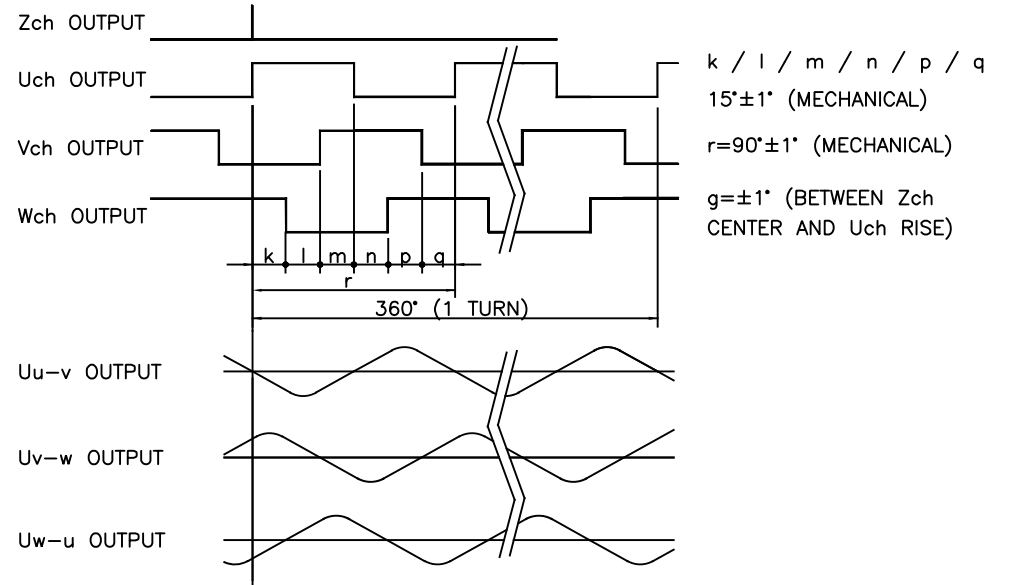
Sold & Serviced By:

**ELECTROMATE**  
 Canadian and International Sales  
 877-737-8698  
 sales@electromate.com  
 www.electromate.com

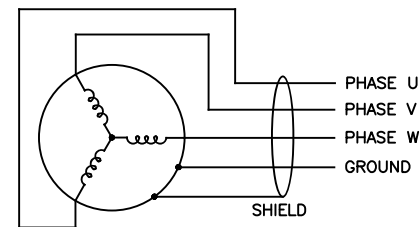
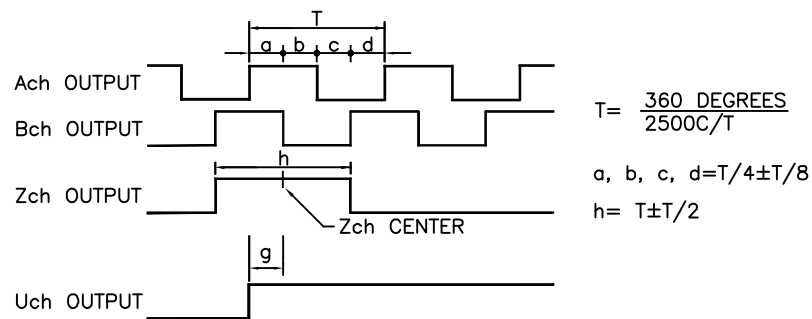
**SERVO2GO.com**  
 U.S. Sales  
 877-378-0240  
 sales@servo2go.com  
 www.servo2go.com

AC SERVOMOTOR SPECIFICATION – PERMANENT MAGNET 8 POLES		
INPUT POWER SUPPLY	VAC	120
RATED OUTPUT	W	400
VOLTAGE CONSTANT	V(rms)/K(rpm)±10%	13.8
RATED WINDING CURRENT	A (rms)	5.7
PEAK WINDING CURRENT	A (rms)	17.1
WINDING RESISTANCE	V ±10%@20°C	0.85 LINE-TO-LINE
WINDING INDUCTANCE	mH ±20%	2.9 LINE-TO-LINE
RATED TORQUE	Nm(kgf-cm)	1.27(12.95)
PEAK TORQUE	Nm(kgf-cm)	3.8(38.75)
TORQUE CONSTANT	Nm/A(rms)±10%	0.222
RATED SPEED	rpm/min	3000
MAXIMUM SPEED	rpm/min	6000
WEIGHT	KG (LBS)	1.4(3.1)
INSULATION CLASS		B 130°C
ENCODER RESOLUTION		2500 LINES/REV.
SHAFT LOAD – AXIAL	N(MAX)	70 N/15LB
SHAFT LOAD – RADIAL	N(MAX)	240 N/54LB
MOTOR RATING	REF NOTE 3	IP65
AMBIENT TEMPERATURE	OPERATING	0 TO 40C°
AMBIENT TEMPERATURE	STORAGE	-20 TO 80C°
AMBIENT HUMIDITY MAX		85%
INERTIA – WITH ENCODER	kg m <sup>2</sup>	0.0000272

**TIMING LOGIC / ENCODER SIGNALS**  
 (NOT TO SAME SCALE AS OTHER DETAIL)



**TIMING LOGIC / ENCODER SIGNALS**



CONTRACT NO.		APPLIED MOTION PRODUCTS, INC.	
APPROVALS	DATE		
DRAWN	R. JONEZ	5/19/14	<b>SERVO MOTOR SPECIFICATIONS</b>
CHECKED			
APPROVED			
APPROVED			B FSCM NO. DWG NO. J0400-301-4-000 REV E
SCALE: NONE		SHEET 2 OF 2	