

[Products](#) » [Motion-in-a-box](#)


## Si 2035 Programmable Stepper Drive Starter Kit

To get started on your first motion control project using Si "Simple Indexer" software Applied Motion offers a starter kit with everything you need to get on your way.

### Kit Contents

- [Si 2035 Stepper drive](#)
- [4023-820-001 Step Motor](#)
- [Programming cable](#)
- [Power Cable](#)
- [Software disc](#)
- [Hardware manual](#)

### Drive Specifications

|  |                                     |
|--|-------------------------------------|
| <b>Output Current</b><br>Software Selectable | 0.5-2.0 amps                        |
| <b>Bus Voltage</b>                           | 35VDC                               |
| <b>Input Voltage</b><br>Switch Selectable    | 110 / 220 VAC                       |
| <b>Max Output Power</b>                      | 70Watts                             |
| <b>Communication</b>                         | RS-232 Port (Serial)                |
| <b>Inputs</b>                                | 8 (User Programmable)               |
| <b>Outputs</b>                               | 4 (General Purpose)                 |
|  | <a href="#">Go to Si2035 Page »</a> |

### Motor Specifications

|   |                          |
|---|--------------------------|
| <b>Full steps</b><br>per revolution         | 200                      |
| <b>Step Angle</b>                           | 1.8°                     |
| <b>Winding resistance</b>                   | 0.7 Ohms                 |
| <b>Winding Inductance</b>                   | 1.4 mH                   |
| <b>Phase Current</b><br>(Series connection) | 2.7 * A                  |
| <b>Rotor Inertia</b>                        | 0.547 oz-in <sup>2</sup> |
| <b>Holding Torque</b>                       | 74.9 oz-in               |
| <b>Operating temp range</b>                 | -20 to +50 oC            |
| <b>Weight</b>                               | 1.17 lbs                 |

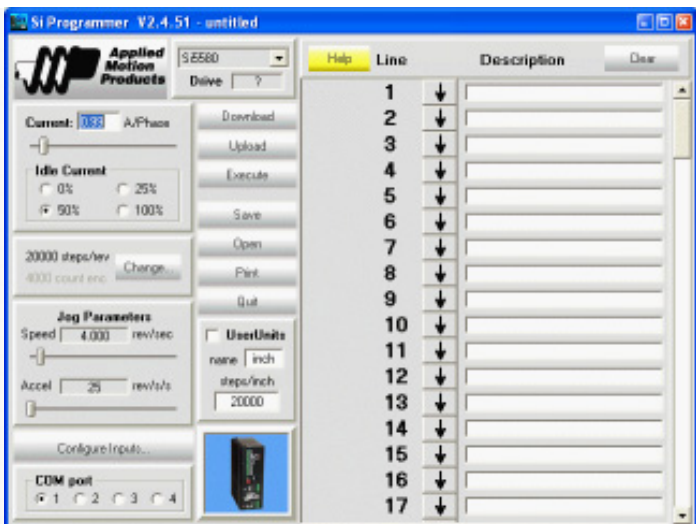
NOTE - ratings are for motor only based on motor wired in series.

### Software

The Si "Simple Indexer" software really must be the easiest motion control software ever. No code to learn, no syntax to get wrong. Just click on the icons and fill in the numbers. Yet the Si programmer can achieve surprisingly complex tasks. [more»](#)

\* Drive setting with Si2035 should be 2.0A

## Dimensions



## Performance

This performance curve is based on tests with the Si2035 set to 2.0A and 2000 steps per rev. Actual performance results may vary by application .

