

8324S007

Lo-Cog® DC Servo Motor



Assembly Data	Symbol	Units	Value
Reference Voltage	E	V	24
No-Load Speed	S _{NL}	rpm (rad/s)	10,158 (1064)
Continuous Torque (Max.) ¹	T _C	oz-in (N-m)	2.6 (1.8E-02)
Peak Torque (Stall) ²	T _{PK}	oz-in (N-m)	17 (1.2E-01)
Weight	W _M	oz (g)	8.8 (250)
Motor Data			
Torque Constant	K _T	oz-in/A (N-m/A)	3.09 (2.18E-02)
Back-EMF Constant	K _E	V/krpm (V/rad/s)	2.29 (2.18E-02)
Resistance	R _T	Ω	4.33
Inductance	L	mH	2.34
No-Load Current	I _{NL}	A	0.18
Peak Current (Stall) ²	I _P	A	5.54
Motor Constant	K _M	oz-in/√W (N-m/√W)	1.49 (1.05E-02)
Friction Torque	T _F	oz-in (N-m)	0.35 (2.5E-03)
Rotor Inertia	J _M	oz-in-s ² (kg-m ²)	2.3E-04 (1.6E-06)
Electrical Time Constant	τ _E	ms	0.54
Mechanical Time Constant	τ _M	ms	14.7
Viscous Damping	D	oz-in/krpm (N-m-s)	0.020 (1.4E-06)
Damping Constant	K _D	oz-in/krpm (N-m-s)	1.6 (1.1E-04)
Maximum Winding Temperature	θ _{MAX}	°F (°C)	311 (155)
Thermal Impedance	R _{TH}	°F/watt (°C/watt)	70.5 (21.4)
Thermal Time Constant	τ _{TH}	min	10.7
Gearbox Data			
Encoder Data			
Channels			3
Resolution		CPR	500

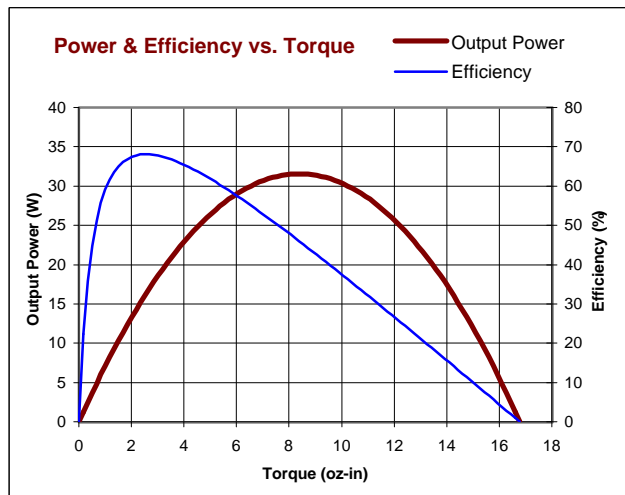
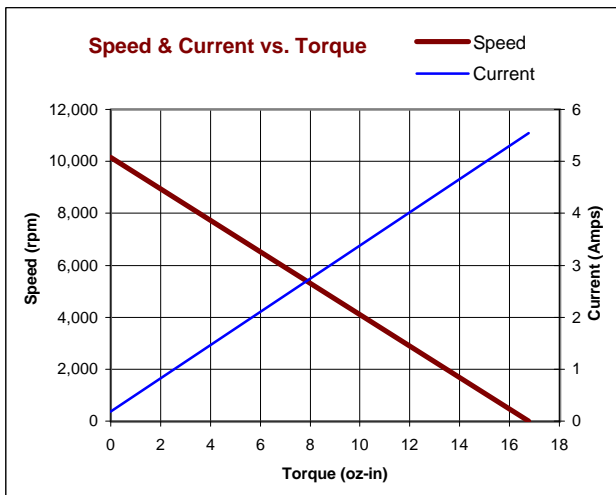
Included Features

- 2-Pole Stator
- Ceramic Magnets
- Heavy-Gauge Steel Housing
- 7-Slot Armature
- Silicon Steel Laminations
- Stainless Steel Shaft
- Copper-Graphite Brushes
- Diamond Turned Commutator
- Motor Ball Bearings

Customization Options

- Alternate Winding
- Sleeve or Ball Bearings
- Modified Output Shaft
- Custom Cable Assembly
- Special Brushes
- EMI/RFI Suppression
- Spur or Planetary Gearbox
- Special Lubricant
- Optional Encoder
- Fail-Safe Brake

1 - Specified at max. winding temperature at 25°C ambient without heat sink. 2 - Theoretical values supplied for reference only.

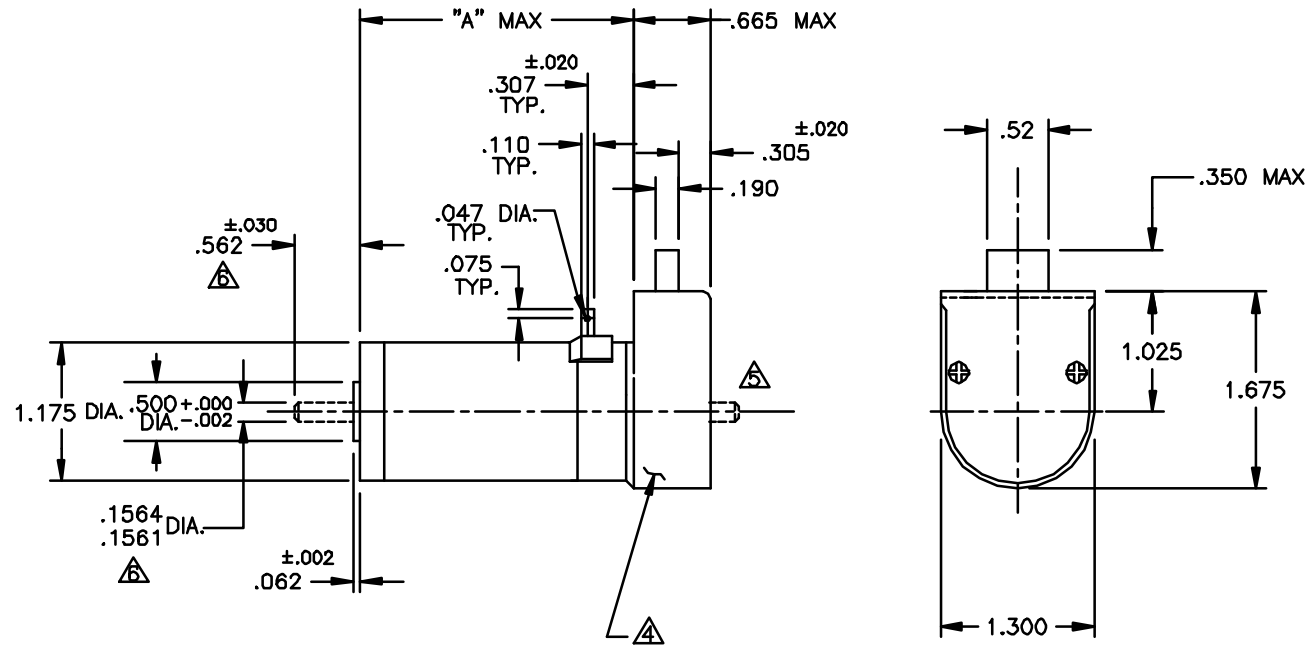
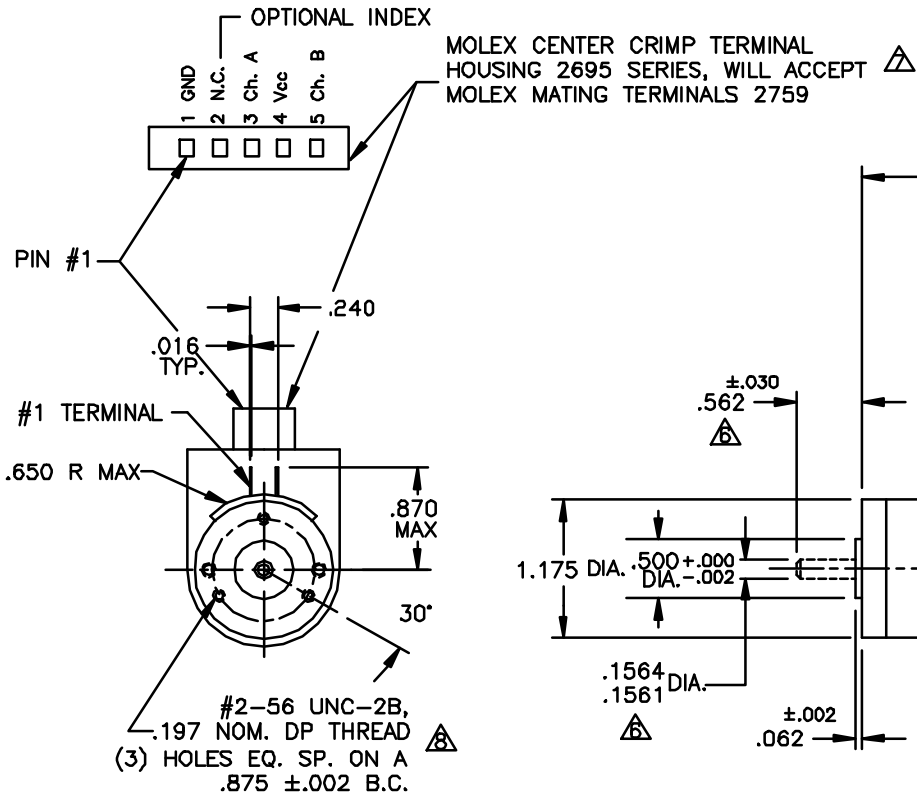


All values are nominal. Specifications subject to change without notice. Graphs are shown for reference only.

© 2001 Pittman.

NOTICE: CONFIDENTIAL PROPRIETARY INFORMATION THIS PRINT CONTAINS IDEAS, INFORMATION, AND INTELLECTUAL PROPERTY WHICH ARE THE EXCLUSIVE PROPERTY OF PITTMAN, DIVISION OF PENN ENGINEERING & MANUFACTURING CORP. RECIPIENT MUST KEEP THE INFORMATION DISCLOSED HEREIN CONFIDENTIAL AND RECIPIENT IS EXPRESSLY PROHIBITED FROM COPYING OR PUBLICATION OF THIS PRINT EXCEPT TO OTHERS IN THEIR ORGANIZATION ON A NEED-TO-KNOW BASIS

REVISIONS				
LTR	DESCRIPTION	DRFT/ENGR	DATE	APPR
B	REDRAWN & REVISED	RJS/RJS	12/30/96	JRM
C	REVISED NOTE 1	DLF/DLF	1/2/98	JRM
D	DIM. .016 WAS .020	TMG/TMG		



NOTES:

1. SHAFT ROTATION IS CW WHILE VIEWING MOUNTING END, WITH POSITIVE (+) VOLTAGE APPLIED TO #1 TERMINAL.
 2. MOTOR HAS PRELOADED BALL BEARINGS PER P-107.
 3. TERMINALS ARE PLATED FOR SOLDERING AND WILL MATE WITH .110 PUSH-ON RECEPTACLE.
- Δ ENCLOSED IS A HEDS-91X0 OPTICAL ENCODER.
 - Δ OPTIONAL REAR SHAFT EXTENSIONS ARE AVAILABLE.
 - Δ ALL SHAFT DIMENSIONS NOTED ARE STANDARD, (13-706-00 \square). FOR ALL OTHER CONFIGURATIONS REFER TO DATA SHEET.
 - Δ OPTIONAL WIRE PACKAGES AVAILABLE, SEE WORK ORDER FOR P/N.
 - Δ OPTIONAL MTG. PATTERN: #4-40 UNC-2B, (3) HOLES LOCATED AS SHOWN ON MTG. END.

83X4	2.323
83X3	2.073
83X2	1.948
MODEL	"A" MAX

UNLESS OTHERWISE SPECIFIED DIMENSIONS ARE IN INCHES		FILE:	150\307	
TOLERANCES ARE:		DRAFTED BY:	RJS	DATE:
FRACTION	±1/64	ENGINEERED BY:	RJS	12/20/96
DECIMAL	±.015	APPROVED BY:	JRM	12/30/96
ANGLES	±1°	NEXT ASSY:		
BREAK ALL SHARP EDGES		USED ON:		
MATERIAL:				
FINISH:				
PITTMAN Pittman Engineering & Manufacturing Corp., PA USA		TITLE: OUTLINE AND MOUNTING DIMENSIONS 83XX W/91X0 ENCODER		
DWG. NO. B-		150-307		REV. D
SCALE: NONE		SHEET 1 OF 1		